



Community Governance Review 2025

Draft Recommendations for consultation

Content

1.	Introduction	1
2.	The Review	1
3.	Existing Parish Arrangements	2
4.	Charter Trustees	2
5.	Parish and Town Council Functions	3
6.	Parish and Ward Boundary Changes	5
7.	Draft Recommendations by Area	5
8.	Summary of Initial Representations Received.....	6
9.	Next steps - Representations	7
10.	Publication of responses – confidentiality and data protection	7
A.	BURTON AND WINKTON.....	9
B.	HURN	11
C.	HIGHCLIFFE AND WALKFORD	14
D.	CHRISTCHURCH TOWN	17
E.	THROOP AND HOLDENHURST	22
F.	BROADSTONE	24
G.	REDHILL AND NORTHBOURNE.....	27
H.	BOSCOMBE AND POKESDOWN	31
I.	SOUTHBOURNE	36
J.	POOLE TOWN.....	40
K.	BOURNEMOUTH TOWN.....	48

1. Introduction

- 1.1 Bournemouth, Christchurch and Poole Council, at its meeting on Tuesday 15 October 2024 resolved that a Community Governance Review be conducted for the whole of the Bournemouth, Christchurch and Poole area, as defined in the published terms of reference, in accordance with Part 4, Chapter 3 of the Local Government and Public Involvement in Health Act 2007. The Council is required to have regard to the Guidance on Community Governance Reviews issued by the Secretary of State for Housing, Communities and Local Government.

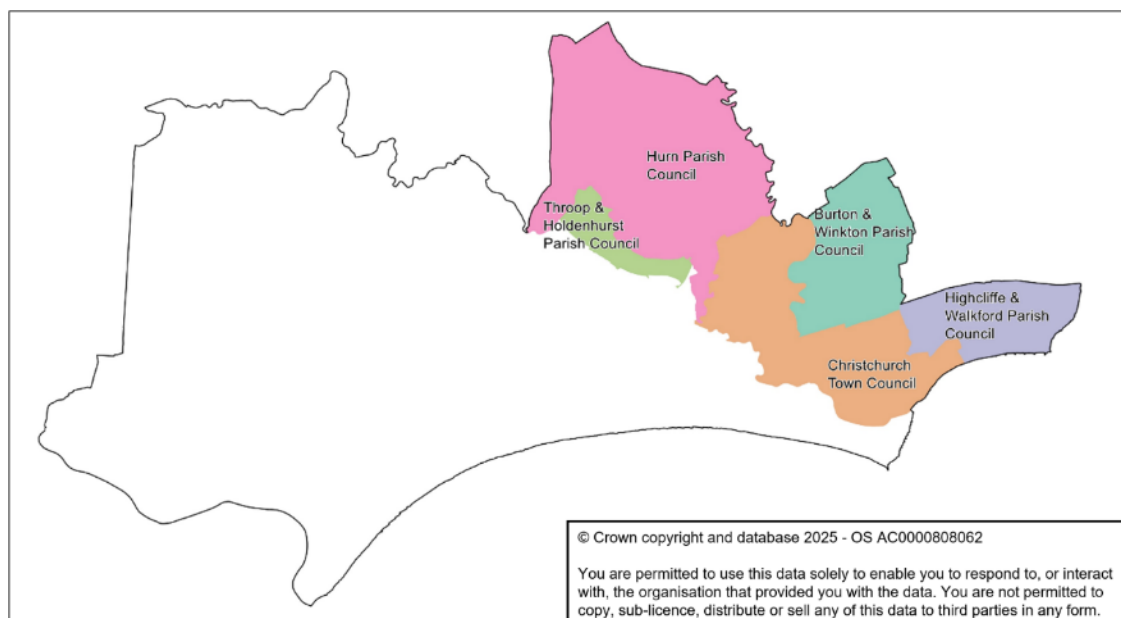
2. The Review

- 2.1 This Review commenced on 16 October 2024, when the Council published a Terms of Reference document and invited initial submissions from individuals or organisations who had an interest in the Review by way of a survey. In the Terms of Reference, the Council published a timetable for the Review.
- 2.2 The formal survey period, inviting interested parties to make initial submissions, commenced on 25 November 2024 and closed on 19 January 2025. The survey was published on the Council's web site and public notice boards, publicised through social media channels, press releases and local libraries and hubs, but more targeted engagement was sent to:-
- Existing parish council clerks;
 - Dorset Association of Parish and Town Council's Chief Executive;
 - Neighbouring councils in Dorset and Hampshire;
 - The five Members of Parliament representing the BCP Council area;
 - Individuals and local organisations registered on various mailing lists held by the Council.
- 2.3 Details of the survey were also sent to each Member of Bournemouth, Christchurch and Poole Council.
- 2.4 To oversee the community governance review and to consider representations received during the initial submission phase, the Council appointed a Community Governance Review Task and Finish Group of 10 councillors with cross-party representation.
- 2.5 In preparing these Draft Proposals, the Council has been mindful of the initial submissions that have been received, which are referenced in this document and published as a separate appendix. The Council also has the role of balancing these submissions against the wider requirements and duties that are placed upon it in the 2007 Act. In particular, the Council has a duty to ensure that community governance within its area under review reflects the identities and interests of the community in that area; and is effective and convenient.

- 2.6 In assessing this criteria, the community governance review is required to take into account:-
- (a) The impact of community governance arrangements on community cohesion; and
 - (b) The size, population and boundaries of a local community or parish.
- 2.7 The aim of the review is to bring about improved and stronger community engagement, more cohesive communities, better local democracy and more effective and convenient delivery of local services; ensuring electors across the whole area are treated equitably and fairly.

3. Existing Parish Arrangements

- 3.1 The whole of the BCP Council currently operates with two tiers of local authority, BCP Council covering the whole area, and either existing town and parish councils or charter trustees representing smaller areas, as detailed below.
- 3.2 Bournemouth, Christchurch and Poole Council has five existing parishes of Burton and Winton, Christchurch, Hurn, Highcliffe and Walkford, and Throop and Holdenhurst in north Bournemouth, each with their own Parish or Town Council of the same name. The remainder of the area shown in white on the map below is officially unparished but served by charter trustees.

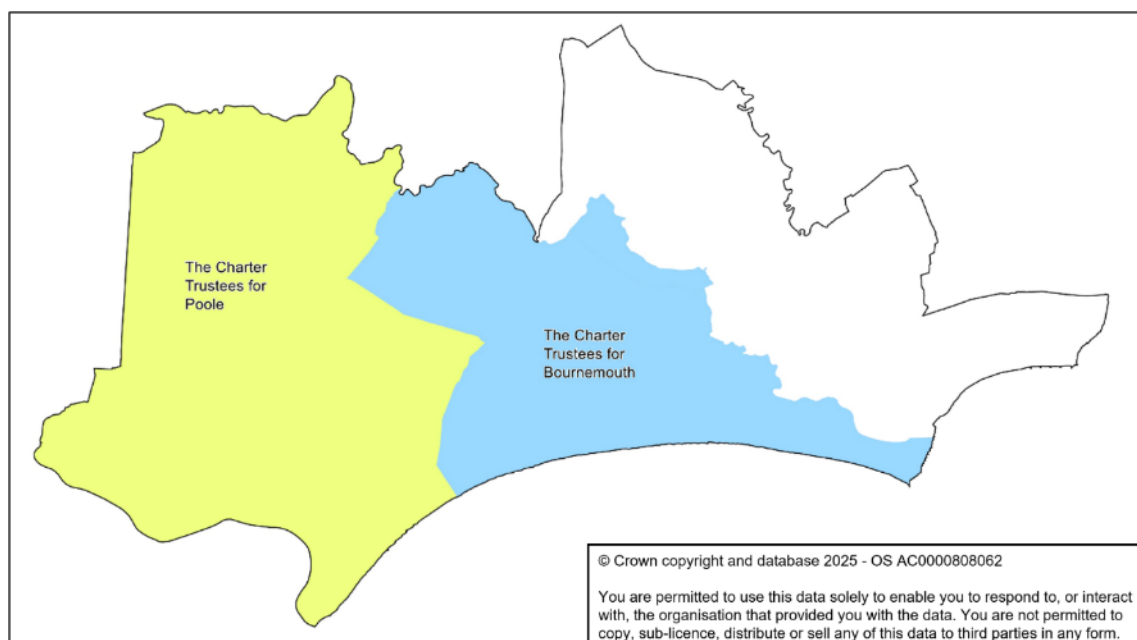


4. Charter Trustees

- 4.1 Although the majority of Bournemouth and the whole of Poole are not parished, these areas are currently served by two bodies called Charter Trustees. These were established in 2019 to maintain and promote the civic and ceremonial traditions of the former respective borough Mayors, to act as custodian of the historic charters

and maintain the civic and ceremonial assets. The Charter Trustees powers are limited to these primary functions only, which has caused some frustration amongst some Charter Trustees and Mayors who have wished to support more community-based activities and events and to provide grant funding for individuals and local organisations.

- 4.2 The Charter Trustees agree an annual precept which is collected through council tax in the same way as parish and town councils. If the whole of the area served by the Charter Trustees is included within one or more parish, the Charter Trustees, as a body, can be abolished, otherwise the Charter Trustees shall continue to co-exist alongside any new parishes and shall result in two local precepts for those within affected areas and result in three tiers of local authority rather than two in some areas.
- 4.3 For avoidance of doubt, it is not possible to abolish the Charter Trustees and to have only BCP Council as a single-tier of local authority.



5. Parish and Town Council Functions

- 5.1 The Task and Finish Group recognises the important role that parish and town councils can play at a local community level serving as a key representative voice and often acting as the eyes and ears for other upper tier local government, public agencies and other organisations to raise local concerns.
- 5.2 Councillors for parish and town councils are normally elected to office every four years on the same day as elections for BCP Council, however, if new councils are established through this review, it is likely that the elections will take place in May 2026 with the councillors elected serving an initial five-year term. Future elections will then be combined with BCP Council elections in May 2031 and then every four years thereafter. Further information on parish and town councils can be obtained from the

National Association of Local Councils website, www.nalc.gov.uk

- 5.3 Parish and town councils are a statutory consultee on planning, highways and other regulatory matters, and may deliver or support other local services. Depending upon the size, capacity, ambitions and decisions of each council, the services provided by parish and town councils can range from very few activities to wide ranging functions.
- 5.4 The table below illustrates the potential division of responsibility between BCP Council and parish and town councils should any be created. As can be seen and although not exhaustive, most services provided by town and parish councils are discretionary.

Responsibility ● Statutory ○ Discretionary	BCP Council	Parish/ Town
Abandoned Vehicles	●	
Allotments		●
Anti-social Behaviour	●	
Asylum Seekers and Refugees	●	
Benefits	●	
Bins, Recycling and Litter	●	
Births, Deaths and Ceremonies	●	
Bus Passes	●	
Bus Shelters	○	○
Car Parks	○	○
Care and Support for Adults	●	
CCTV	○	○
Cemeteries	○	○
Children and Youth Services	●	
Community Centres	○	○
Community Consultations	○	○
Community Engagement	○	○
Community Events	○	○
Community Safety Partnership	●	
Coroners Service	●	
Council Tax and Business Rates	●	
Education and Families	●	
Electoral Services	●	
Electric Charging Points	○	○
Environmental Health	●	
Flood Risk	●	
Fly Tipping	●	

Responsibility ● Statutory ○ Discretionary	BCP Council	Parish/ Town
Grants	○	○
Grass Cutting	●	
Harbours	●	
Housing and Homelessness	●	
Leisure Facilities	○	○
Libraries	●	
Licensing	●	
Local Land Charges	●	
Local Resilience Forum	●	
Memorials	○	○
Neighbourhood Plans		●
Noise and Nuisance Complaints	●	
Parking Enforcement	●	
Planning and Development	●	
Play Areas	○	○
Public Conveniences	○	○
Public Health	●	
Public Rights of Way	●	○
Public Seating	○	○
Recreation Grounds	○	○
Resilience and Emergency Planning	●	
Roads and Highways Maintenance	●	
Skateparks	○	○
Street Cleansing	●	
Street Lighting	●	
Tourist Information	○	○
Trading Standards	●	

- 5.5 The level of council tax is not a determining factor for a community governance review, however, it is acknowledged that residents will be curious to understand the likely cost if parish and town councils are established. The average Band D council tax charge for parish level precepts within Dorset and BCP in 2024/25 was £42.96 a year, with many not charging a precept and the highest charging £263.67 a year.
- 5.6 The existing charges within BCP are as follows:-

Body	Annual Band D Council Tax
Bournemouth Charter Trustees	£2.27
Burton and Winkton Parish Council	£17.25
Christchurch Town Council	£70.23
Highcliffe and Walkford Parish Council	£27.46
Hurn Parish Council	£33.55
Poole Charter Trustees	£2.14
Throop and Holdenhurst Parish Council	£39.81

- 5.7 It is impossible to provide an indication of the anticipated council tax for any new councils at this stage as all the functions listed in paragraph 5.4, except for allotments, are discretionary.

6. Parish and Ward Boundary Changes

- 6.1 Reference is made in this paper to parish and parish ward boundaries being coterminous with the principal council (BCP) wards or parliamentary boundaries. Extending parish or parish ward boundaries to break the coterminous arrangements requires the creation of additional electoral arrangements which can be confusing to electors, adds complexity to election management and is not considered to be effective and convenient.
- 6.2 The alternative to breaking the coterminous relationship is to seek consent from the Local Government Boundary Commission for England for a related alteration to redraw the ward boundaries of BCP Council. Regard must be had to the effect and impact of such related alterations on the electoral equality of the respective wards. Where such alterations are recommended, an assessment as to the likely success of alterations has been considered.

7. Draft Recommendations by Area

- 7.1 Since the Community Governance Review includes a review of various parts of Bournemouth, Christchurch and Poole (including existing parishes), this document is divided into a series of sections and sub-sections relating to each parish or proposed area to assist the reader in following the proposed changes and consider their response.

- 7.2 Each section also follows a consistent structure, including a summary of the existing boundary areas, warding, and the projected five-year electorate forecasts, the total number of councillors, the ratio of electors per councillor and the variance of this ratio from the average (where warded). Details of any representations received have been referenced and an explanation for any proposed changes have also been included.
- 7.3 The electoral forecasting for each polling district has been updated using the February 2025 register of electors and used for each proposed area within this document. A revised schedule of all polling districts will be published on the web site for referencing during the stage 3 consultation.

8. Summary of Initial Representations Received

- 8.1 During Stage One of the Community Governance Review, 73 responses were received to the invitation of initial submissions which have been taken into account by the Task and Finish Group. Full details of all responses have been published as a separate document.
- 8.2 The Task and Finish Group met on six occasions to consider the initial submissions which varied in detail and scale. Due to the lack of detail of some submissions, it was not possible to progress these as an option at this time.
- 8.3 The Task and Finish Group were satisfied, however, that there was sufficient interest to support a number of the submissions received and to recommend the establishment of new or revised parish governance arrangements throughout the area and for these to be subject to public consultation.
- 8.4 In developing these draft recommendations, the Task and Finish Group analysed various modelling options and considered carefully whether to put forward proposals for the establishment of two larger town councils for the areas of Poole and Bournemouth not otherwise covered by localised submissions.
- 8.5 After careful consideration, these draft recommendations do include proposals for the establishment of two large town councils, details of which are set out in the corresponding sections later in this paper. It should be noted that there were a number of separate submissions supporting the establishment of a large town council for the whole of Poole which informed this decision.
- 8.6 Although, the submissions for a Bournemouth Town Council were not detailed, it was felt important to include this as a draft recommendation to allow the public the opportunity to express an opinion and to influence the final decision. Failure to include a town council for Bournemouth as an option at this stage would prevent it being implemented regardless of the level of public support.
- 8.7 If in the event that support is forthcoming for one, but not both, of the proposed town councils for Poole and Bournemouth, it will be necessary to alter the proposed boundary of the supported council to ensure that the whole of the respective charter trustee area is included. This will be to ensure the effective and convenient delivery

of services.

9. Next steps - Representations

- 9.1 All residents and any other persons or organisations wishing to make representations on the draft recommendations may do so by completing the online response form or completing a paper version of the form available at local libraries. Paper copies of the response form can also be sent by post upon request.
- 9.2 Completed paper forms can be delivered to local libraries or sent by post to:-
 Richard Jones
 Head of Democratic Services
 Bournemouth, Christchurch and Poole Council
 Civic Offices
 Bourne Avenue
 Bournemouth
 BH2 6DY
- 9.3 Alternatively, forms can be sent by email to cgr@bcpcouncil.gov.uk
- 9.4 If emailing, please entitle your response 'BCP Community Governance Review 2025 – Response to Draft Recommendations'.
- 9.5 Representations that are received will be taken into account by judging them against the criteria in the Local Government and Public Involvement in Health Act 2007.
- 9.6 The deadline for receipt of comments is midnight on 22 June 2025.
- 9.7 It would be helpful if you could make clear in your response whether you represent an organisation or group, and in what capacity you are responding.
- 9.8 An electronic version of this consultation paper is available to download from our web site. Visit [\[INSERT URL\]](#) or scan the QR code on the front of this paper.

10. Reproduction of Maps

- 10.1 All maps contained within this document are reproduced under licence from © Crown copyright and database 2025 - OS AC0000808062. You are permitted to use this data solely to enable you to respond to, or interact with BCP Council. You are not permitted to copy, sub-licence, distribute or sell any of this data to third parties in any form.

11. Publication of responses – confidentiality and data protection

- 11.1 Bournemouth, Christchurch and Poole Council will process your personal data in accordance with the Data Protection legislation and in the majority of circumstances,

this will mean that your personal data will not be disclosed to third parties.

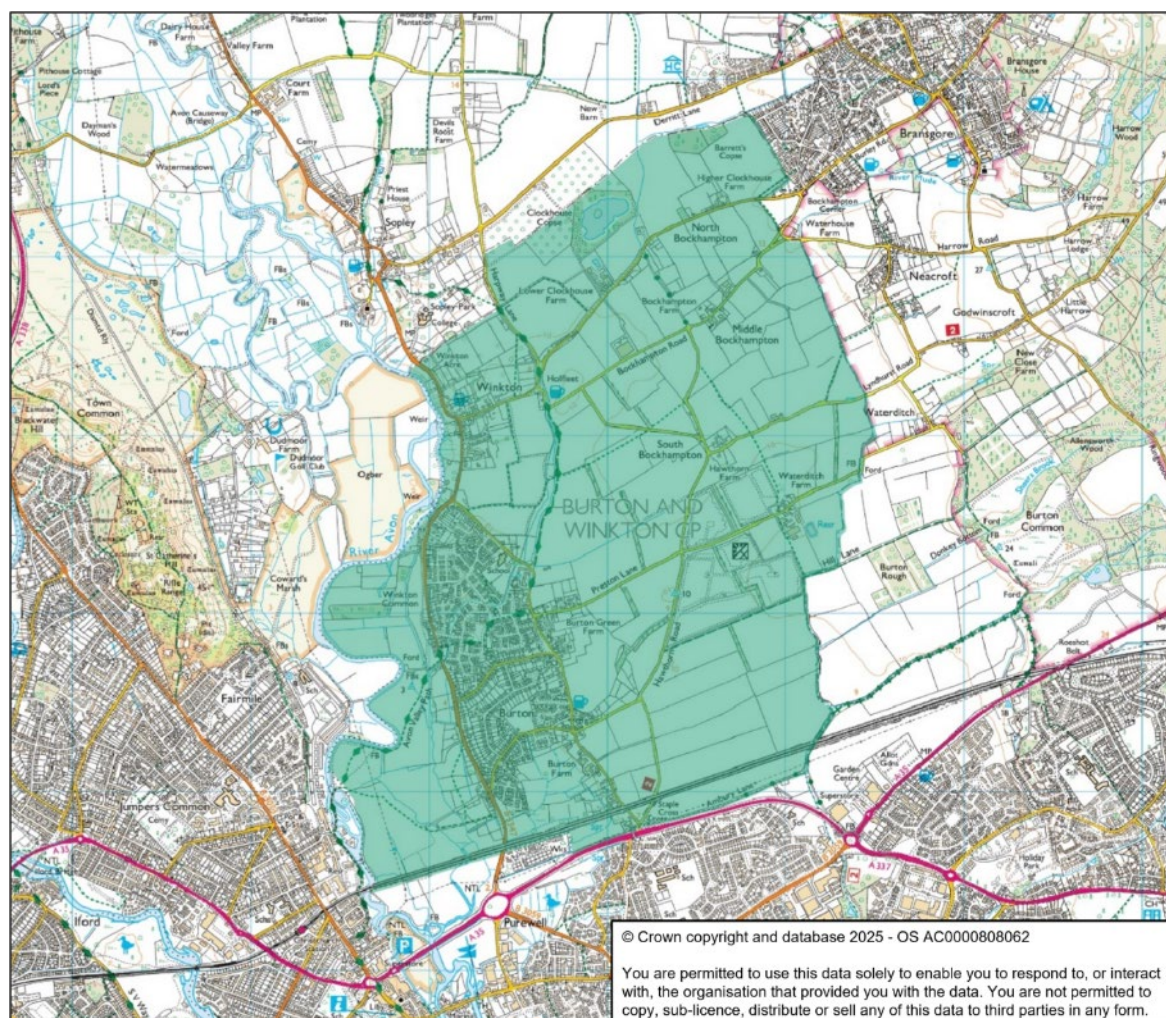
- 11.2 However, you should be aware that under the Freedom of Information Act 2000, there is a statutory Code of Practice with which public authorities must comply. If we receive a request for disclosure of the information we may be required to disclose information about individual respondents. An automatic confidentiality disclaimer generated by IT systems will not, of itself, be regarded as binding on the Council.

A. BURTON AND WINKTON

1. Background

Parish	Electorate 2025	Electorate 2030	Seats	Elector Ratio	Variance from average
Burton	3,360	3,378	10	338	N/A

- 1.1 Burton parish is unwarded and has 10 elected representative seats on the Council.
- 1.2 The entire parish falls wholly within the BCP electoral ward of Burton and Grange but excludes that part of the ward south of Christchurch by-pass which is within the boundary of Christchurch Town Council. The current parish boundary is shown below.



- 1.3 The projected electorate growth over 5 years is 0.54%
- 1.4 Contested elections were held in Burton and Winkton in May 2019, although there were no contested elections in May 2023. The projected elector to councillor ratio is 338:1

- 1.5 Burton and Winkton Parish Council responded to the invitation of initial submissions, requesting that no changes be made to the parish area or electoral arrangements.
- 1.6 A representation (52) was received which suggested the amalgamation of the BCP Council wards of Burton and Grange, and Mudeford, Stanpit and West Highcliffe. This suggestion included the whole of the parish of Burton and Winkton, part of Highcliffe and Walkford Parish Council and part of Christchurch Town Council. The Task and Finish Group considered the submission but it was felt that there was insufficient evidence to demonstrate that the proposal would lead to, or bring about, improved community engagement, cohesion or local democracy contrary to the aim of the review, and therefore dismissed the proposal.
- 1.7 Five anonymous respondents, from Ashley Cross, Broadstone, Canford Heath, Jumpers Common and Oakdale, suggested that all existing parish and town council arrangements should be abolished citing various reasons. The Task and Finish Group considered the comments, assessed them against the published guidance and concluded that there was insufficient evidence provided to justify the abolition of the Parish Council.
- 1.8 The Task and Finish Group considered the representations received and make the following draft recommendations.

2. Draft Recommendations

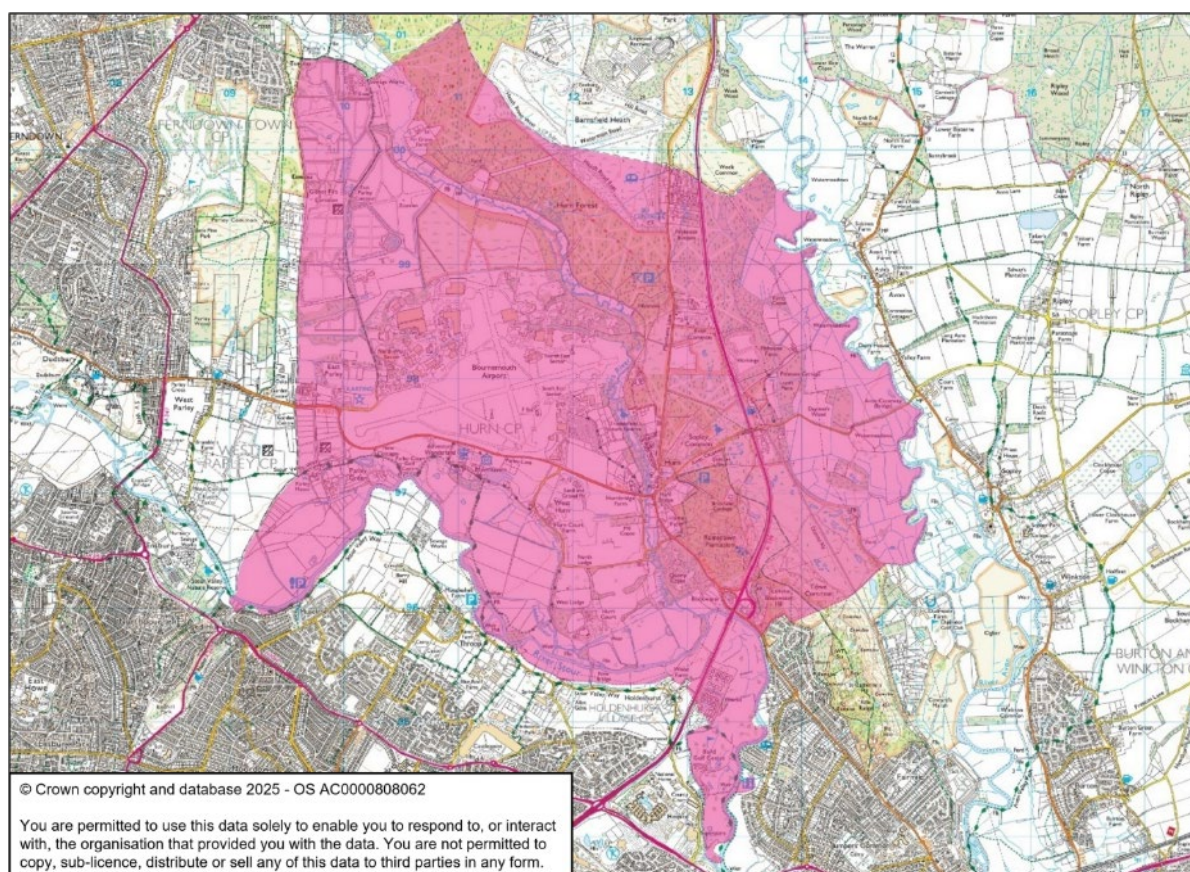
- 2.1 As part of the current Community Governance Review of Bournemouth, Christchurch and Poole, under the terms of reference published on 16 October 2024, the Council has made the following draft recommendations in relation to the parish of Burton and Winkton:
- 2.2 That:
 - (a) the parish of Burton and Winkton should not be abolished;
 - (b) no change be made to the boundary of the existing parish of Burton and Winkton;
 - (c) the name of the parish of Burton and Winkton should not be altered;
 - (d) the parish should continue to have a parish council;
 - (e) the name of the parish council should not be altered;
 - (f) the parish council for Burton and Winkton shall consist of 10 councillors.

B. HURN

1. Background

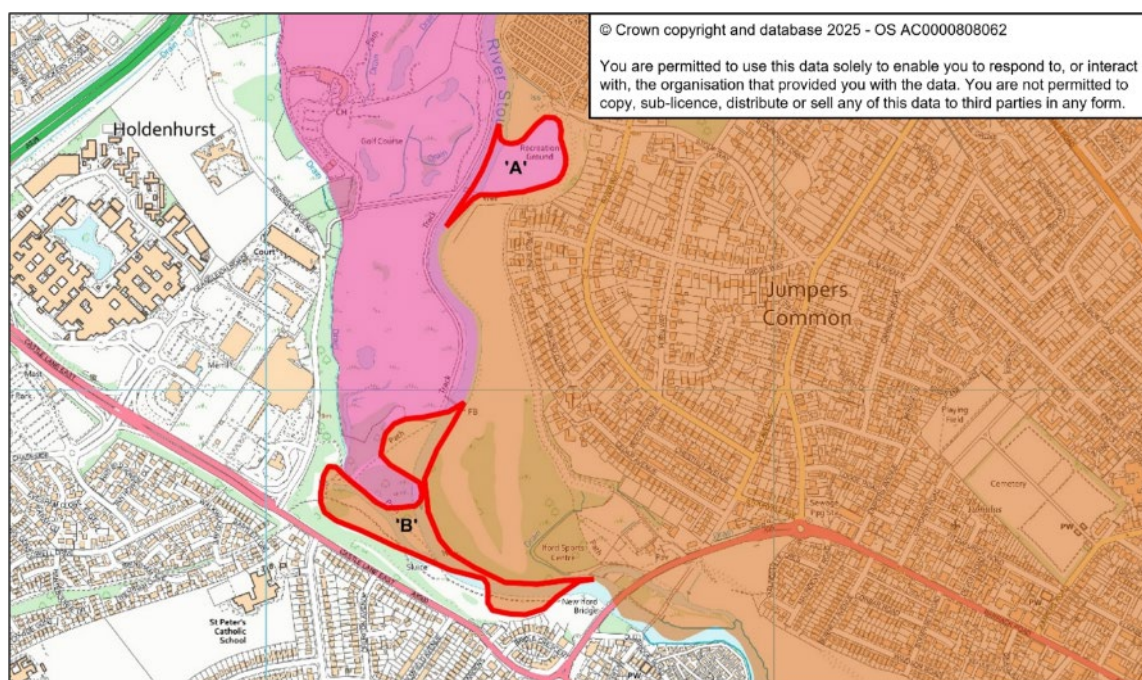
Parish	Electorate 2025	Electorate 2030	Seats	Elector Ratio	Variance from average
Hurn	594	596	6	99	N/A

- 1.1 Hurn parish is unwarded and has 6 elected representative seats on the Council. The minimum number of seats permitted on a parish council is 5.
- 1.2 The entire parish falls wholly within the BCP electoral ward of Commons but excludes that part of the ward to the south-east which is within the boundary of Christchurch Town Council, and a single property known as Wood Farm which now falls within the parish of Throop and Holdenhurst. The boundary around this property was redrawn in 2020 which is accessed from the Holdenhurst. The current parish boundary is shown below.



- 1.3 The projected electorate growth over 5 years is 0.34%
- 1.4 Contested elections were held in Hurn in May 2019, although there were no contested elections in May 2023. The projected elector to councillor ratio is 96:1
- 1.5 Hurn Parish Council has submitted a response to the invitation of initial submissions, requesting that no changes be made to the parish area or electoral arrangements.

- 1.6 A representation from Christchurch Town Council (70) was received which suggested a number of boundary changes with adjacent parishes. In relation the boundary line with Hurn parish, the Town Council highlighted two areas where the current boundary traverses the river and suggested that this be addressed by redrawing the boundary along the line of the river. These are shown on the map below where the area marked as 'A' would transfer from Hurn Parish to Christchurch Town and the area marked as 'B' would transfer from Christchurch Town to Hurn Parish. There are no properties within these areas and therefore no change to the electorate.



- 1.7 Hurn Parish Council was not contacted with regards to this proposal before submission, but the ward councillor has retrospectively sought the view of Hurn Parish Council and confirmed that the parish council raises no objection at this stage.
- 1.8 Five anonymous respondents, from Ashley Cross, Broadstone, Canford Heath, Jumpers Common and Oakdale, suggested that all existing parish and town council arrangements should be abolished citing various reasons. The Task and Finish Group considered the comments, assessed them against the published guidance and concluded that there was insufficient evidence provided to justify the abolition of the Parish Council.
- 1.9 The Task and Finish Group considered the representations received and make the following draft recommendations.

2. Draft Recommendations

- 2.1 As part of the current Community Governance Review of Bournemouth, Christchurch and Poole, under the terms of reference published on 16 October 2024, the Council has made the following draft recommendations in relation to the parish of Hurn:

2.2 That:

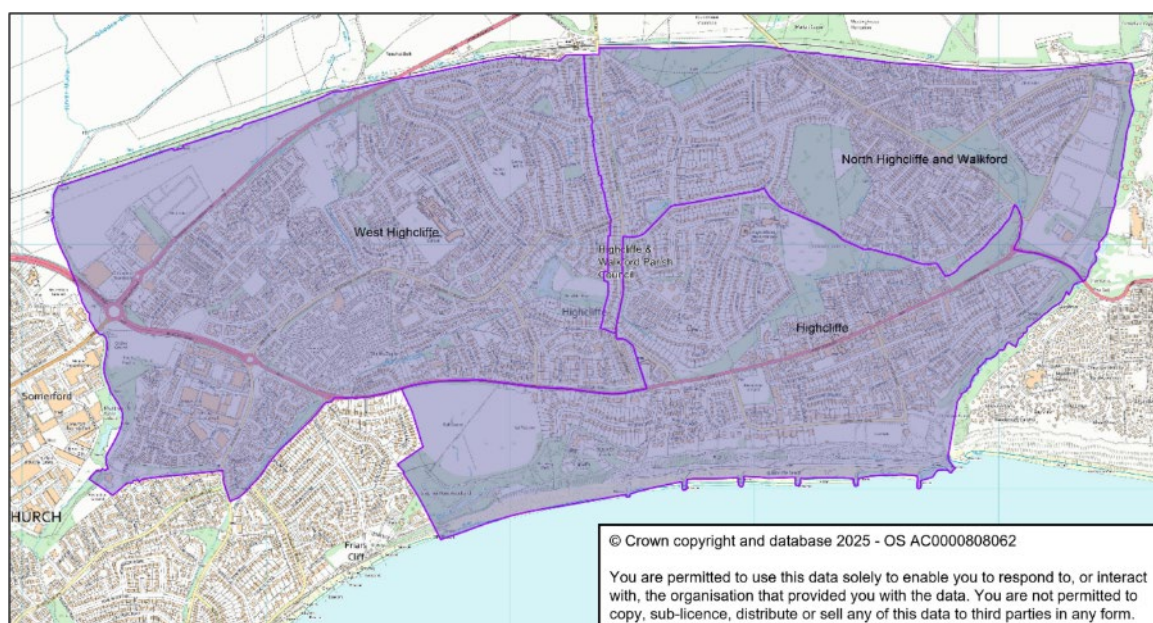
- (a) the parish of Hurn should not be abolished;
- (b) the boundary of the existing parish of Hurn be altered as shown on the plan at paragraph 1.6 above;
- (c) the name of the parish of Hurn should not be altered;
- (d) the parish should continue to have a parish council;
- (e) the name of the parish council should not be altered;
- (f) the parish council for Hurn shall consist of 6 councillors.

C. HIGHCLIFFE AND WALKFORD

1. Background

Parish Wards	Electorate 2025	Electorate 2030	Seats	Elector Ratio	Variance from average
Highcliffe	3,450	3,541	3	1,180	+8.7%
North Highcliffe & Walkford	3,075	3,159	3	1,053	-3.0%
West Highcliffe	5,113	5,246	5	1,049	-3.4%

- 1.1 Highcliffe and Walkford parish is warded and has 11 elected representative seats on the Council.
- 1.2 The parish falls within the BCP electoral ward of Highcliffe and Walkford and part of the Mudeford, Stanpit and West Highcliffe ward. The Parish Council was established in 2019.



- 1.3 The projected electorate growth over 5 years for the existing area is 2.65%
- 1.4 All seats in each of the three wards were contested in Highcliffe and Walkford in May 2019, although there were no contested elections in May 2023. The projected average elector to councillor ratio is 1,086:1
- 1.5 Highcliffe and Walkford Parish Council have not requested any changes to the existing arrangements.
- 1.6 A representation (52) was received which suggested the amalgamation of the BCP Council wards of Burton and Grange, and Mudeford, Stanpit and West Highcliffe. This suggestion included the whole of the parish of Burton and Winkton, part of Highcliffe and Walkford Parish Council and part of Christchurch Town Council. The

Task and Finish Group considered the submission but it was felt that there was insufficient evidence to demonstrate that the proposal would lead to, or bring about, improved community engagement, cohesion or local democracy contrary to the aim of the review, and therefore dismissed the proposal.

- 1.7 Five anonymous respondents, from Ashley Cross, Broadstone, Canford Heath, Jumpers Common and Oakdale, suggested that all existing parish and town council arrangements should be abolished citing various reasons. The Task and Finish Group considered the comments, assessed them against the published guidance and concluded that there was insufficient evidence provided to justify the abolition of the Parish Council.
- 1.8 No changes are therefore recommended for the Highcliffe and Walkford Parish.
- 1.9 The Task and Finish Group considered the representations received and make the following draft recommendations.

2. Draft Recommendations

- 2.1 As part of the current Community Governance Review of Bournemouth, Christchurch and Poole, under the terms of reference published on 16 October 2024, the Council has made the following draft recommendations in relation to the parish of Highcliffe and Walkford:
- 2.2 That:
 - (a) the parish of Highcliffe and Walkford should not be abolished;
 - (b) no change be made to the boundary of the existing parish of Highcliffe and Walkford;
 - (c) the name of the parish of Highcliffe and Walkford should not be altered;
 - (d) the parish should continue to have a parish council;
 - (e) the name of the parish council should not be altered;
 - (f) the parish of Highcliffe and Walkford continue to be divided into three parish wards without modification and those wards named respectively:-
 - (i) Highcliffe
 - (ii) North Highcliffe and Walkford
 - (iii) West Highcliffe
 - (g) the parish council for Highcliffe and Walkford shall consist of 11 councillors;
 - (h) the number of councillors elected to each of the respective wards be as follows:-

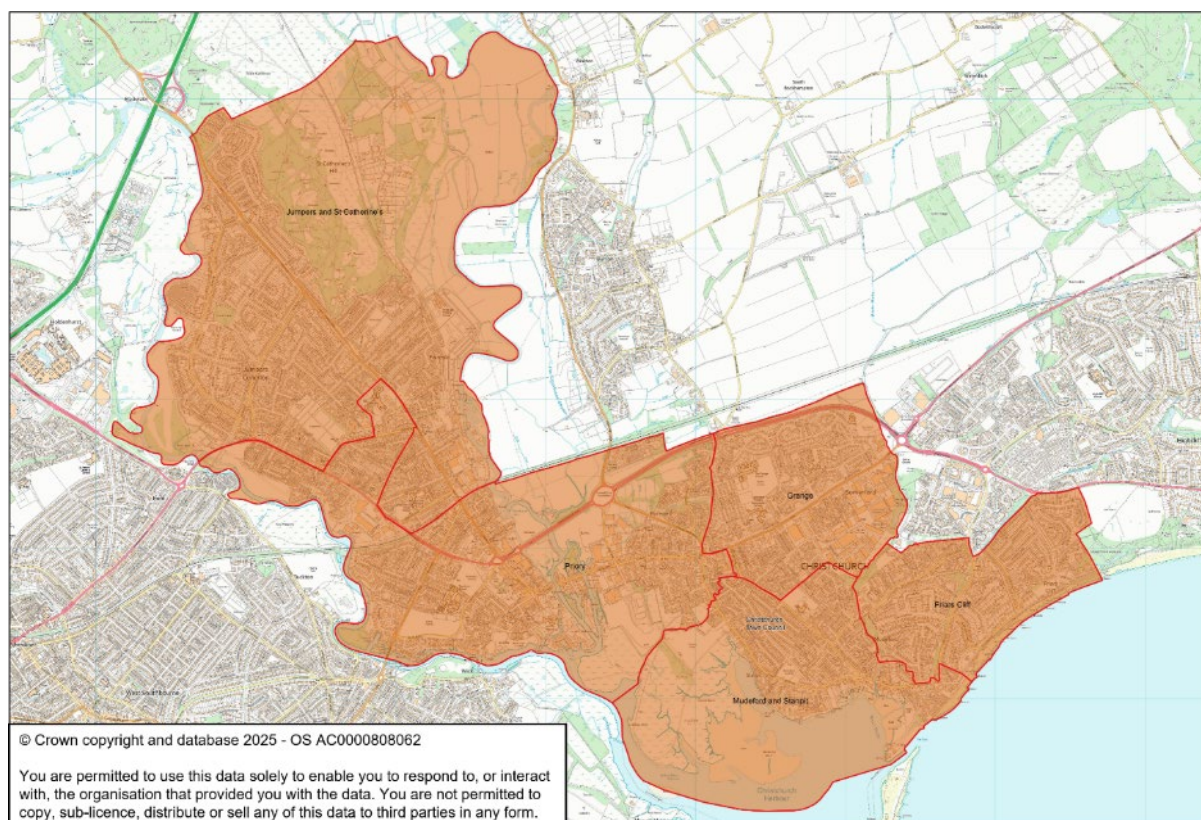
- (i) Highcliffe – 3 councillors
- (ii) North Highcliffe and Walkford – 3 councillors
- (iii) West Highcliffe – 5 councillors.

D. CHRISTCHURCH TOWN

1. Background

Parish ward	Electorate 2025	Electorate 2030	Seats	Elector Ratio	Variance from average
Friars Cliff	2,633	2,690	2	1,345	+1.0%
Grange	3,757	3,796	3	1,265	-5.0%
Jumpers & St. Catherine's	7,890	8,009	6	1,335	+0.2%
Mudford & Stanpit	2,650	2,675	2	1,338	+0.4%
Priory	7,822	8,143	6	1,357	+1.9%

- 1.1 Christchurch parish is warded, has the alternative style of Town and has 19 elected representative seats on the Council.
- 1.2 The parish falls within the BCP electoral ward of Christchurch Town and part of the BCP wards of Commons, Burton and Grange and Mudford, Stanpit and West Highcliffe. The Town Council was established in 2019.



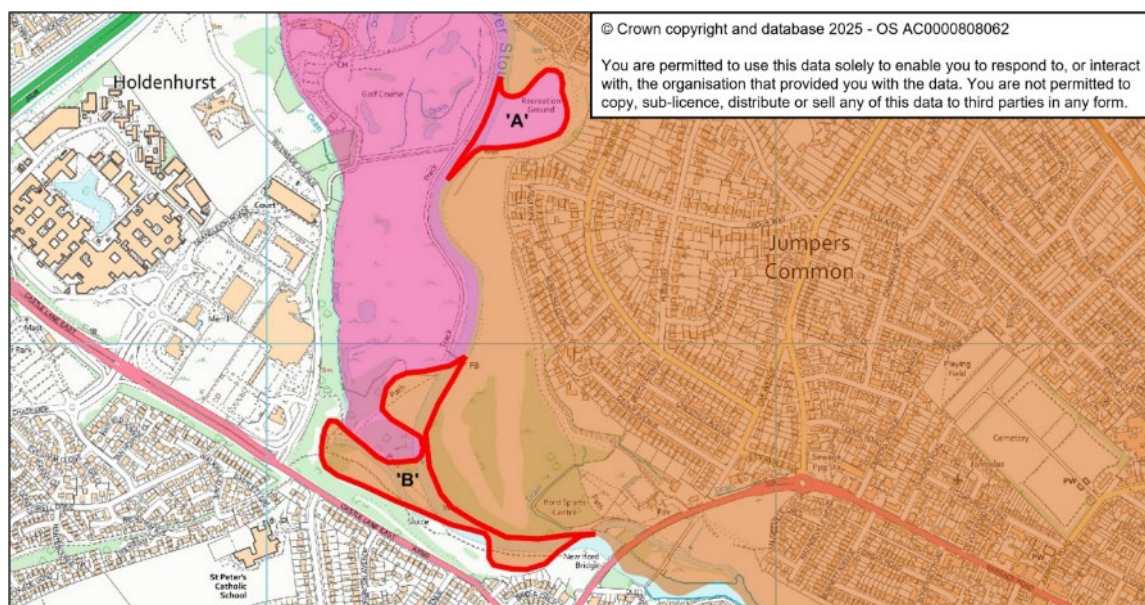
- 1.3 The projected electorate growth over 5 years for the existing area is 2.27%
- 1.4 All seats in each of the five wards were contested in Christchurch in May 2019, although there were only contested elections within the Grange ward in May 2023.

The projected average elector to councillor ratio is 1,332:1

- 1.5 A representation (52) was received which suggested the amalgamation of the BCP Council wards of Burton and Grange, and Mudeford, Stanpit and West Highcliffe. This suggestion included the whole of the parish of Burton and Winkton, part of Highcliffe and Walkford Parish Council and part of Christchurch Town Council. The Task and Finish Group considered the submission but it was felt that there was insufficient evidence to demonstrate that the proposal would lead to, or bring about, improved community engagement, cohesion or local democracy contrary to the aim of the review, and therefore dismissed the proposal.
- 1.6 Five anonymous respondents, from Ashley Cross, Broadstone, Canford Heath, Jumpers Common and Oakdale, suggested that all existing parish and town council arrangements should be abolished citing various reasons. The Task and Finish Group considered the comments, assessed them against the published guidance and concluded that there was insufficient evidence provided to justify the abolition of the Town Council.
- 1.7 A representation from Christchurch Town Council (70) was received which suggested a number of boundary changes with adjacent parishes and an alteration to the internal warding arrangements. These suggestions are outlined as follows.

Boundary with Hurn

- 1.8 In relation the boundary line with Hurn parish, the Town Council highlighted two areas where the current boundary traverses the river and suggested that this be addressed by redrawing the boundary along the line of the river. These are shown on the map below where the area marked as 'A' would transfer from Hurn Parish to Christchurch Town and the area marked as 'B' would transfer from Christchurch Town to Hurn Parish. There are no properties within these areas and therefore no change to the electorate.

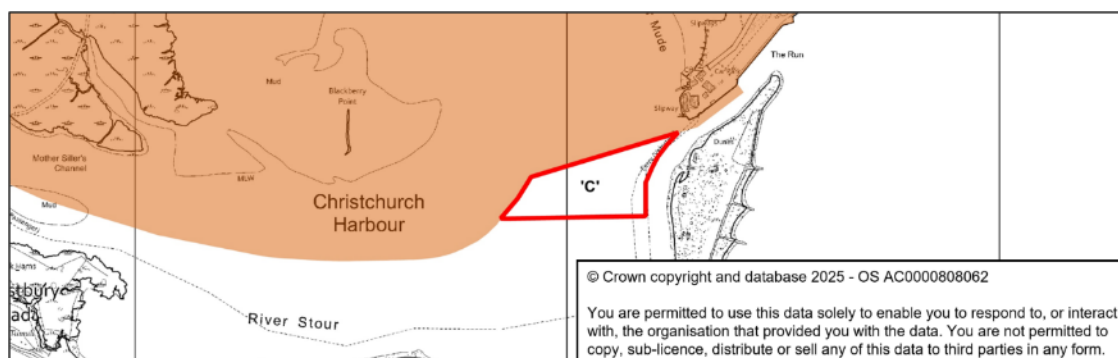


- 1.9 Hurn Parish Council was not contacted with regards to this proposal before

submission, but the ward councillor has retrospectively sought the view of Hurn Parish Council and confirmed that the parish council raises no objection at this stage.

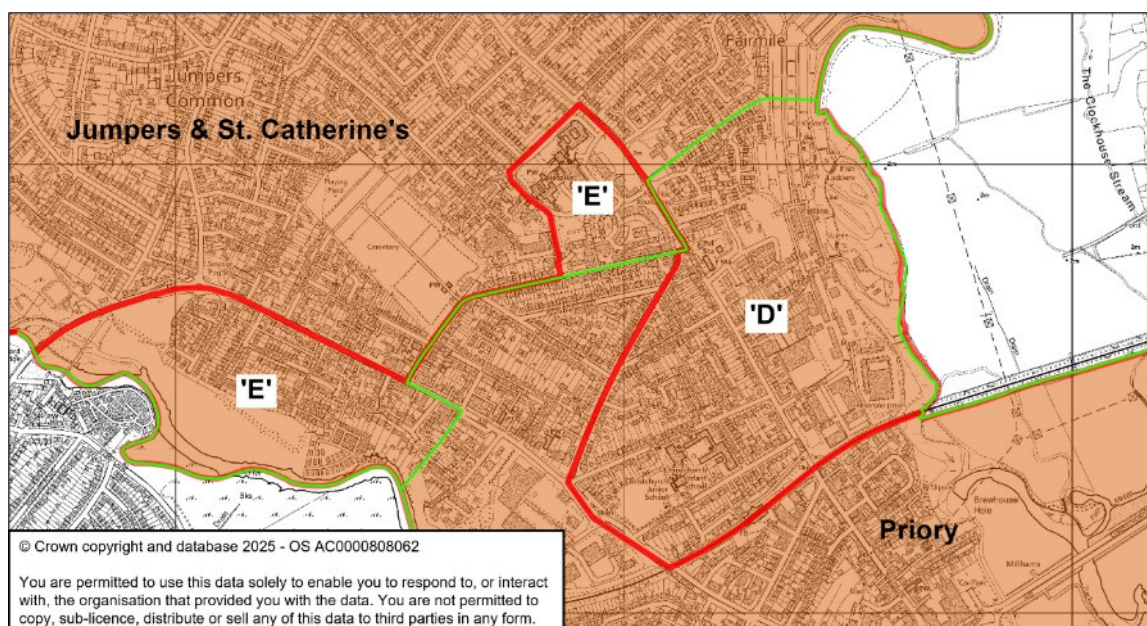
Harbour Boundary

- 1.10 The Town Council further highlighted an anomaly with the boundary within the harbour entrance. This anomaly was a result of boundary changes arising from local government re-organisation in 2019 and whilst there is no impact on the electorate, it is considered an appropriate opportunity to rectify the issue.
- 1.11 The Task and Finish Group supported the request to alter the boundary of the Town Council and the Mudeford and Stanpit ward to include the unparished area marked as 'C' on the map below. The revised boundary would be coterminous with the BCP ward boundary between the wards of Mudeford, Stanpit & West Highcliffe and East Southbourne & Tuckton.



Internal Ward Changes

- 1.12 The Town Council's final request was to alter the boundary between the parish wards of Jumpers & St. Catherine's and Priory so as to be coterminous with the BCP Council ward boundary between the wards of Christchurch Town and Commons. The map below shows the existing parish ward boundary in red, and the BCP ward boundary in green. The effect of the proposed change would be to transfer the area marked as 'D' from the Jumpers & St. Catherine's ward into the Priory ward; and to transfer the areas marked as 'E' from Priory ward into the Jumpers & St. Catherine's ward.



- 1.13 Taking into the account the internal ward boundary change between Jumpers & St. Catherine's and Priory wards the revised electorate and elector to councillor ratios are shown in the table below.
- 1.14 It is an important democratic principle that each person's vote should be of equal weight so far as possible, having regard to other legitimate competing factors, when it comes to the election of councillors. Guidance suggests that it is not in the interests of effective and convenient local government to have significant variances in levels of representation between different parish wards. There is a risk that where one parish ward is over-represented by councillors, the residents of that parish ward (and their councillors) could be perceived as having more influence than others on the council.
- 1.15 Guidance further recommends that the elector to councillor ratio variance should be within +/-10%.
- 1.16 The revised projected elector to councillor ratio under these arrangements would be 1,332:1 with the resultant variances ranging between -5.2% to +7.3%.

Parish ward	Electorate 2025	Electorate 2030	Seats	Elector Ratio	Variance from average
Friars Cliff	2,633	2,690	2	1,345	+1.0%
Grange	3,757	3,796	3	1,265	-5.0%
Jumpers & St. Catherine's	7,478	7,576	6	1,263	-5.2%
Mudford & Stanpit	2,650	2,675	2	1,338	+0.4%
Priory	8,234	8,576	6	1,429	+7.3%

- 1.17 The Task and Finish Group considered the representations received and make the following draft recommendations.

2. Draft Recommendations

2.1 As part of the current Community Governance Review of Bournemouth, Christchurch and Poole, under the terms of reference published on 16 October 2024, the Council has made the following draft recommendations in relation to the parish of Christchurch Town:

2.2 That:

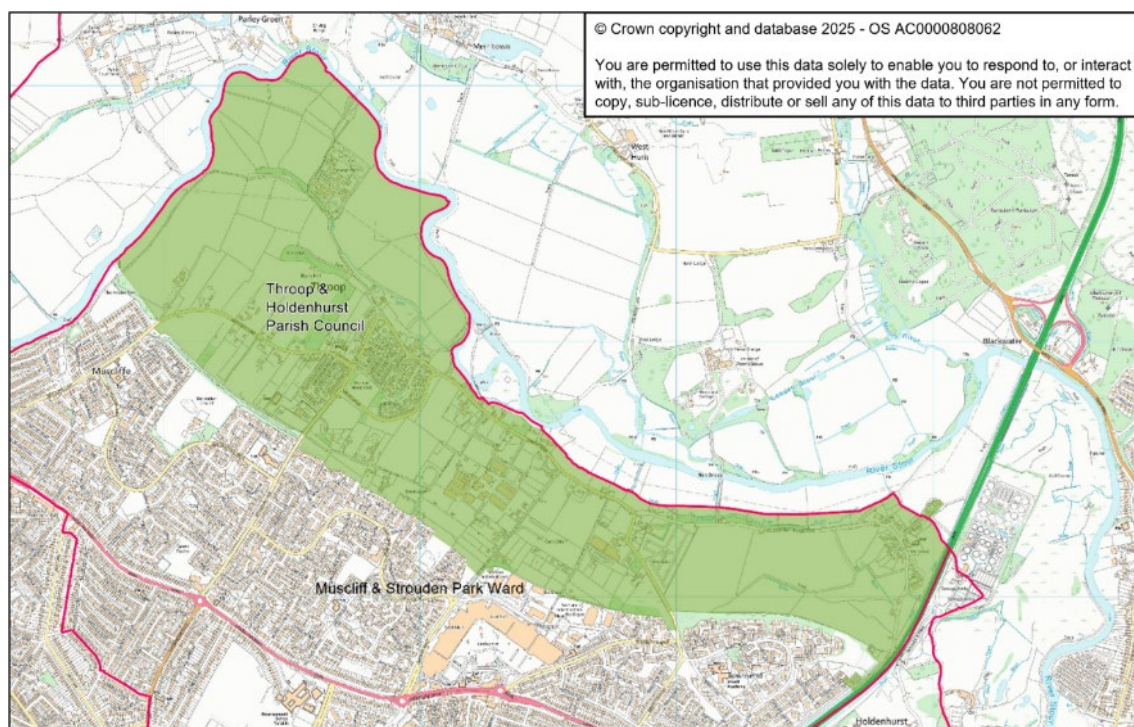
- (a) the parish of Christchurch Town should not be abolished;
- (b) the boundary of the existing parish of Christchurch Town be altered as shown on the plans at paragraph 1.8 and 1.11 above;
- (c) the name of the parish of Christchurch Town should not be altered;
- (d) the parish should continue to have a parish council in the style of a town council;
- (e) the name of the town council should not be altered;
- (f) the parish of Christchurch Town continue to be divided into five parish wards, with those areas remaining unchanged except for the changes arising from the boundary changes referred to in paragraphs 1.8, 1.11 and 1.12 and those wards named respectively:-
 - (i) Friars Cliff
 - (ii) Grange
 - (iii) Jumpers & St. Catherine's
 - (iv) Mudeford & Stanpit
 - (v) Priory
- (g) the parish council for Christchurch Town shall consist of 19 councillors;
- (h) the number of councillors elected to each of the respective wards be as follows:-
 - (i) Friars Cliff - 2 councillors
 - (ii) Grange – 3 councillors
 - (iii) Jumpers & St. Catherine's – 6 councillors
 - (iv) Mudeford & Stanpit – 2 councillors
 - (v) Priory – 6 councillors

E. THROOP AND HOLDENHURST

1. Background

Parish	Electorate 2025	Electorate 2030	Seats	Elector Ratio	Variance from average
Throop and Holdenhurst	593	595	7	85	N/A

- 1.1 Throop and Holdenhurst parish is unwarded and has 7 elected representative seats on the Council.
- 1.2 The entire parish falls almost entirely within the BCP Council electoral ward of Muscliffe & Strouden Park but excludes a single property known as Wood Farm to the north-eastern tip of the parish which falls within the Commons ward. The parish Council was established in 2021. The current parish boundary is shown below.



- 1.3 The projected electorate growth over 5 years is 0.34%
- 1.4 The elections were contested in 2021 when the new parish council was established. The next elections for the parish council are scheduled for 2027. The projected elector to councillor ratio is 85:1
- 1.5 Throop and Holdenhurst Parish Council responded to the invitation of initial submissions, requesting that no changes be made to the parish area or electoral arrangements.
- 1.6 A representation (13) was received suggesting the creation of a new parish council for the Muscliff area or an extension of the existing parish of Throop and Holdenhurst

to include Muscliff. The submission did not include a map or proposed boundary description but did indicate that a new or extended council could provide greater local control and enable greater support for local issues.

- 1.7 The Task and Finish Group considered the submission but it was felt that there was insufficient information provided to demonstrate that the proposal would lead to, or bring about, improved community engagement, cohesion or local democracy contrary to the aim of the review, and therefore dismissed the proposal.
- 1.8 Five anonymous respondents, from Ashley Cross, Broadstone, Canford Heath, Jumpers Common and Oakdale, suggested that all existing parish and town council arrangements should be abolished citing various reasons. The Task and Finish Group considered the comments, assessed them against the published guidance and concluded that there was insufficient evidence provided to justify the abolition of the Parish Council.
- 1.9 The electoral services team requested that the anomaly of Wood Farm, which falls within the parish of Throop and Holdenhurst, be rectified by making a related alteration for submission to the Boundary Commission for England. The submission seeking to alter the BCP Council ward boundary between Muscliff & Strouden Park and Commons to be redrawn to be coterminous with the parish boundary. This will form part of the final recommendations at Stage 4 as this does not alter the perishing arrangements.
- 1.10 The Task and Finish Group considered the representations received and make the following draft recommendations.

2. Draft Recommendations

- 2.1 As part of the current Community Governance Review of Bournemouth, Christchurch and Poole, under the terms of reference published on 16 October 2024, the Council has made the following draft recommendations in relation to the parish of Throop and Holdenhurst:
- 2.2 That:
 - (a) the parish of Throop and Holdenhurst should not be abolished;
 - (b) no change be made to the boundary of the existing parish of Throop and Holdenhurst;
 - (c) the name of the parish of Throop and Holdenhurst should not be altered;
 - (d) the parish should continue to have a parish council;
 - (e) the name of the parish council should not be altered;
 - (f) the parish council for Throop and Holdenhurst shall consist of 7 councillors.

F. BROADSTONE

1. Background

1.1 The area referred to in this section as Broadstone is unparished and comprises the polling district areas detailed in the table in paragraph 1.2 below. Maps showing the extent of all polling districts are contained in a separate annex on the Council's web site.

1.2 A summary of the polling district electorate forecast is shown in the table below:-

Polling Districts	Electorate 2025	Electorate 2030
BS1 - Broadstone 1	2,435	2,477
BS2 - Broadstone 2	2,032	2,046
BS3 - Broadstone 3	1,681	1,762
BS4 - Broadstone 4	2,469	2,543
BS4-A - Broadstone 4A	132	132
Total	8,749	8,960

1.3 The polling districts form the building blocks and are therefore coterminous with the BCP Council ward of Broadstone.

1.4 The projected electorate growth over 5 years is 2.41%.

1.5 There was a single but detailed submission (56) on behalf of Broadstone Neighbourhood Forum for the establishment of a parish of Broadstone with a Town Council of the same name and divided into four wards based on the polling districts, BS1 to BS3 and combining polling districts BS4 and BS4-A to form the fourth. The submission provided evidence of a strong community identity with details of activities, projects and other community-based events. Two further anonymous submissions were received from residents of Broadstone objecting to the establishment of new parishes.

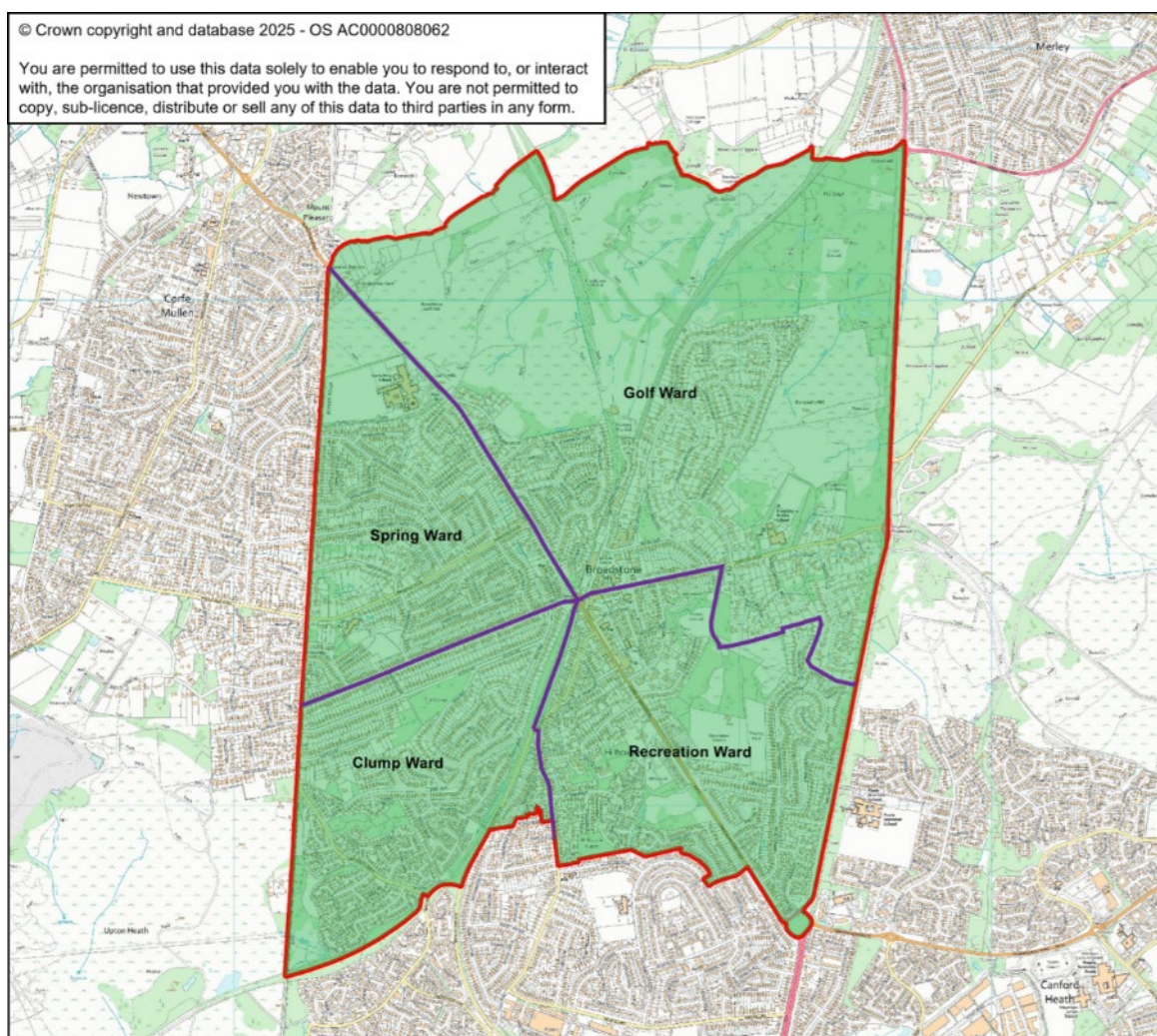
1.6 Following consideration of the representations and a number of options, the Task and Finish Group agreed that a four-warded parish for Broadstone would deliver the optimum electoral equality, be reflective of the community identities and interests and would be effective and convenient.

1.7 It is an important democratic principle that each person's vote should be of equal weight so far as possible, having regard to other legitimate competing factors, when it comes to the election of councillors. Guidance suggests that it is not in the interests of effective and convenient local government to have significant variances in levels of representation between different parish wards. There is a risk that where one parish

ward is over-represented by councillors, the residents of that parish ward (and their councillors) could be perceived as having more influence than others on the council.

- 1.8 Guidance further recommends that the elector to councillor ratio variance should be within +/-10%.
- 1.9 The following warding pattern is recommended by the Task and Finish Group with a total of 14 elected representatives. The projected elector to councillor ratio under these arrangements would be 640:1 with the resultant variances ranging between - 8.2% to +6.6%.

Parish ward	Electorate 2025	Electorate 2030	Seats	Elector Ratio	Variance from average
North West (BS2)	2,032	2,046	3	682	+6.6%
North East (BS3)	1,681	1,762	3	587	-8.2%
South East (BS4)	2,469	2,543	4	636	+0.7%
South West (BS1 and BS4-A)	2,567	2,609	4	652	+1.9%
Total	8,749	8,960	14		



- 1.10 The Task and Finish Group having considered the representations received, make the following draft recommendations.

2. Draft Recommendations

- 2.1 As part of the current Community Governance Review of Bournemouth, Christchurch and Poole, under the terms of reference published on 16 October 2024, the Council has made the following draft recommendations in relation to the unparished area referred to as Broadstone:

- 2.2 That:

- (a) a parish of Broadstone be established;
- (b) the boundary of the parish of Broadstone be drawn to include the existing polling districts of BS1 - Broadstone 1, BS2 - Broadstone 2, BS3 - Broadstone 3, BS4 - Broadstone 4 and BS4-A - Broadstone 4A, as outlined in red on the map in paragraph 1.9 above;
- (c) the name of the established parish be Broadstone;
- (d) the style of the parish of Broadstone be set as a town;
- (e) the parish should have a parish council in the style of town council;
- (f) the name of the town council should be Broadstone Town Council;
- (g) the parish of Broadstone be divided into four parish wards, comprising the area designated on the map in paragraph 1.9 above, and named respectively:-
 - (i) Clump
 - (ii) Golf
 - (iii) Recreation
 - (iv) Spring
- (h) the town council for Broadstone shall consist of 14 councillors;
- (i) the number of councillors elected to each of the respective wards be as follows:-
 - (i) Clump – 4 councillors
 - (ii) Golf – 3 councillors
 - (iii) Recreation – 4 councillors
 - (iv) Spring – 3 councillors

G. REDHILL AND NORTHBOURNE

1. Background

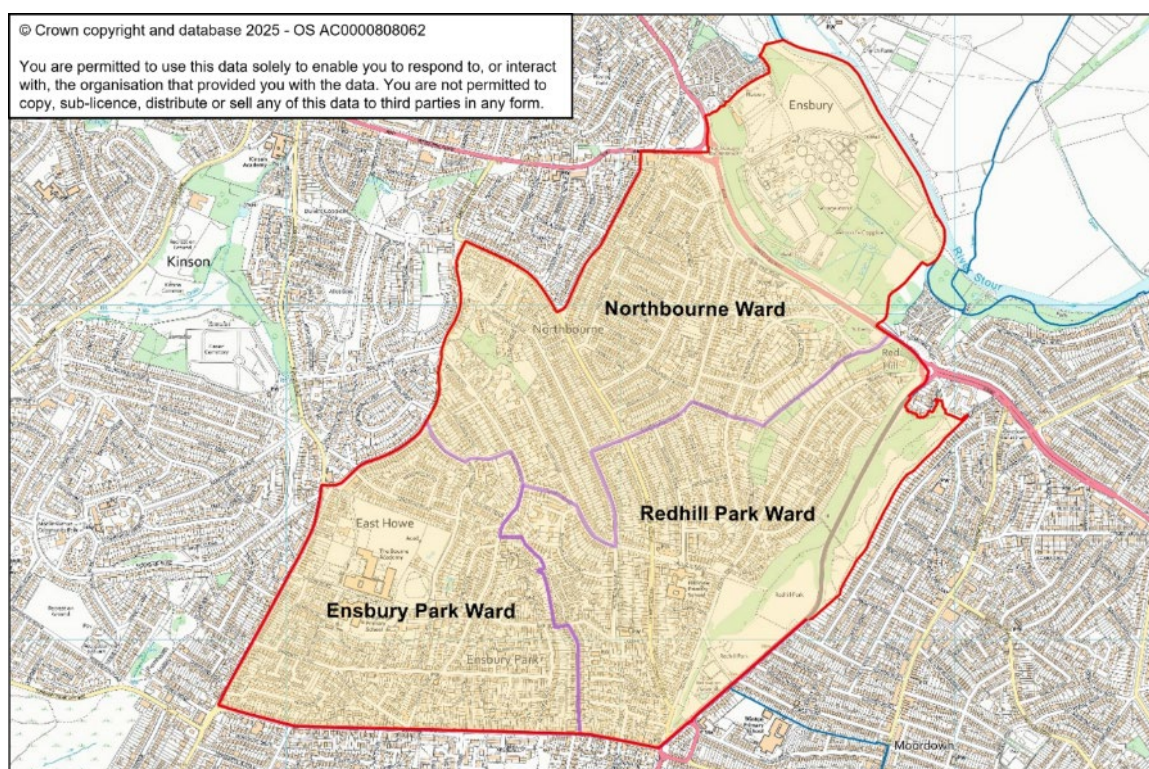
- 1.1 The area referred to in this section as Redhill and Northbourne is unparished and comprises the polling district areas detailed in the table in paragraph 1.2 below. Maps showing the extent of all polling districts are contained in a separate annex on the Council's web site.
- 1.2 A summary of the polling district electorate forecast is shown in the table below:-

Polling Districts	Electorate 2025	Electorate 2030
RN1 – Redhill & Northbourne 1	2,604	2,635
RN2 – Redhill & Northbourne 2	945	997
RN3 – Redhill & Northbourne 3	2,523	2,538
RN4 – Redhill & Northbourne 4	1,553	1,564
Total	7,625	7,734

- 1.3 The polling districts form the building blocks for the proposed parish which are coterminous with the BCP Council ward of Redhill and Northbourne.
- 1.4 The projected electorate growth over 5 years is 1.43%.
- 1.5 Two submissions (55) and (59) were received relating to this part of North Bournemouth, one referring to the Redhill and Northbourne ward and the second, whilst not providing a plan, suggested the boundary should be extended to include parts of Wallisdown, Winton and Moordown. Submission (38) suggested that the whole of Bournemouth, including Boscombe and Pokesdown, Southbourne and Redhill and Northbourne, should be established as a single Town Council, however, the Task and Finish Group considered that there was sufficient evidence to support this as an independent standalone proposal.
- 1.6 The proposal to extend the boundary to include parts of Wallisdown, Winton and Moordown was considered but disregarded by the Task and Finish Group as the description implied a dividing line between west and east Winton and Moordown through the main shopping street (Wimborne Road) and Wallisdown Road to the south.
- 1.7 The principle submission proposed that the boundary should be coterminous with the BCP ward and parliamentary constituency. However, this runs along Redhill Avenue effectively separating the two elements of Redhill Park which is considered to be an important facility for the Redhill and Northbourne community. The Task and Finish Group are therefore recommending that the whole of Redhill Park should be included within the proposed parish boundary as illustrated on the plan in paragraph 1.11

below. There are no properties within the extended area and therefore no impact upon the effective delivery of elections.

- 1.8 Although warding proposals were not submitted the Task and Finish Group felt that establishing 3 wards with equal councillors would be appropriate and achieve optimal electoral equality.
- 1.9 It is an important democratic principle that each person's vote should be of equal weight so far as possible, having regard to other legitimate competing factors, when it comes to the election of councillors. Guidance suggests that it is not in the interests of effective and convenient local government to have significant variances in levels of representation between different parish wards. There is a risk that where one parish ward is over-represented by councillors, the residents of that parish ward (and their councillors) could be perceived as having more influence than others on the council.
- 1.10 Guidance further recommends that the elector to councillor ratio variance should be within +/-10%.
- 1.11 The following warding pattern is recommended by the Task and Finish Group with a total of 9 elected representatives. The projected elector to councillor ratio under these arrangements would be 859:1 with the resultant variances ranging between - 0.7% to +2.2%.



Parish ward	Electorate 2025	Electorate 2030	Seats	Elector Ratio	Variance from average
Ensby Park (RN1)	2,604	2,635	3	878	+2.2%
Northbourne (RN2 and RN4)	2,498	2,561	3	854	-0.7%

Redhill Park (RN3)	2,523	2,538	3	846	-1.6%
Total	7,625	7,734	9		

- 1.12 Finally, although the submission suggested a style of parish for the proposed council, the Task and Finish Group felt that a style of community would be more appropriate and consistent with the other proposed local councils elsewhere in Bournemouth.
- 1.13 The Task and Finish Group having considered the representations received, make the following draft recommendations.

2. Draft Recommendations

- 2.1 As part of the current Community Governance Review of Bournemouth, Christchurch and Poole, under the terms of reference published on 16 October 2024, the Council has made the following draft recommendations in relation to the unparished area referred to as Redhill and Northbourne:

- 2.2 That:

- (a) a parish of Redhill and Northbourne be established;
- (b) the boundary of the parish of Redhill and Northbourne be drawn to include the existing polling districts of RN1 - Redhill & Northbourne 1, RN2 - Redhill & Northbourne 2, RN3 - Redhill & Northbourne 3, RN4 - Redhill & Northbourne 4, and part of MN1 – Moordown 1, as outlined in red on the map in paragraph 1.11 above;
- (c) the name of the established parish be Redhill and Northbourne;
- (d) the style of the parish of Redhill and Northbourne be set as a community;
- (e) the parish should have a parish council in the style of community council;
- (f) the name of the community council should be Redhill and Northbourne Community Council;
- (g) the parish of Redhill and Northbourne be divided into three parish wards, comprising the area designated on the map in paragraph 1.11 above, and named respectively:-
 - (i) Ensbury Park
 - (ii) Northbourne
 - (iii) Redhill Park
- (h) the community council for Redhill and Northbourne shall consist of

9 councillors;

- (i) the number of councillors elected to each of the respective wards be as follows:-

- (i) Ensbury Park – 3 councillors

- (ii) Northbourne – 3 councillors

- (iii) Redhill Park – 3 councillors

H. BOSCOMBE AND POKESDOWN

1. Background

1.1 The area referred to in this section as Boscombe and Pokesdown is unparished and comprises the polling district areas detailed in the table in paragraph 1.2 below. Maps showing the extent of all polling districts are contained in a separate annex on the Council's web site.

1.2 A summary of the polling district electorate forecast is shown in the table below:-

Polling Districts	Electorate 2025	Electorate 2030
BE1 - Boscombe East & Pokesdown 1	1,019	1,040
BE2 - Boscombe East & Pokesdown 2	2,527	2,603
BE3 - Boscombe East & Pokesdown 3	2,636	2,700
BE4 - Boscombe East & Pokesdown 4	1,894	1,934
BW1 - Boscombe West 1	2,177	2,195
BW2 - Boscombe West 2	1,633	1,645
BW3 - Boscombe West 3	1,614	1,642
BW4 - Boscombe West 4	2,532	2,712
Total	16,032	16,471

1.3 The polling districts form the building blocks for the proposed parish which are coterminous with the BCP Council wards of Boscombe West and Boscombe East & Pokesdown.

1.4 The projected electorate growth over 5 years is 2.74%.

1.5 Two submissions (63) and (67) were received relating to this part of central south Bournemouth. Both were similar in referring to Boscombe and Pokesdown, although submission (55) suggested an extension of the parish boundary north of the railway line into Kings Park. Submission (38) suggested that the whole of Bournemouth, including Boscombe and Pokesdown, Southbourne and Redhill and Northbourne, should be established as a single Town Council, however, the Task and Finish Group considered that there was sufficient evidence to support this as an independent standalone proposal.

1.6 The suggestion to extend the boundary north of the railway line into Kings Park falling within polling district LI2 and LI4 was considered but the Task and Finish Group did not feel there was sufficient evidence at this stage to justify this expansion. Whilst it was acknowledged that there were some historic links to Kings Park, the area in question has a wider community use. Furthermore, the railway line forms a

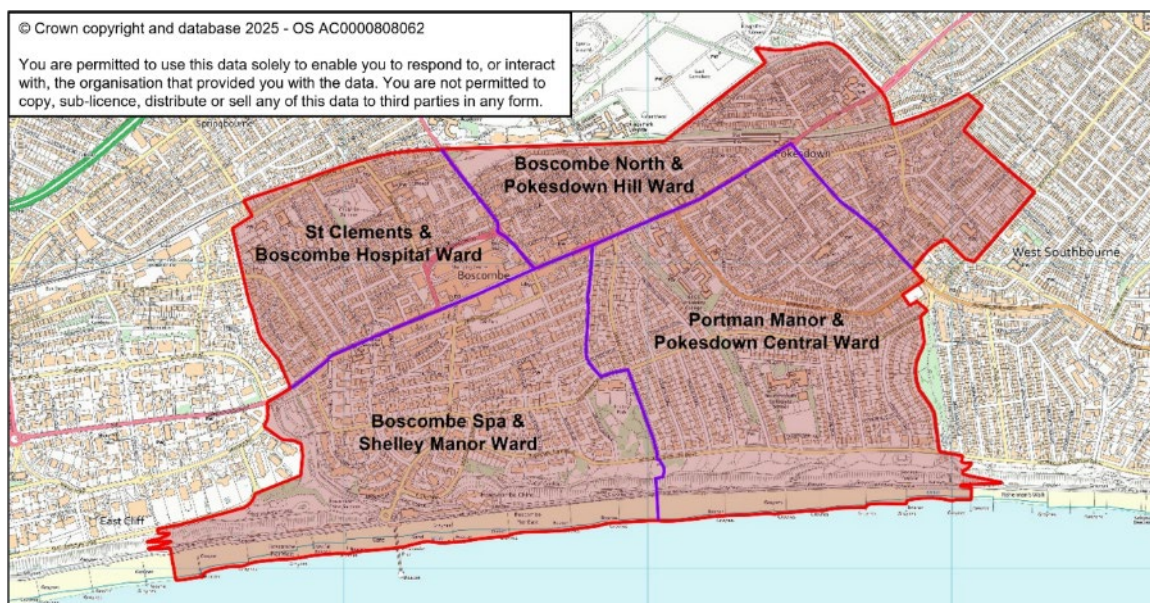
distinct and natural boundary for the proposed parish. This element was not supported at this stage.

- 1.7 The submission also suggested that the boundary to the west of Boscombe West should be extended to include Boscombe Chine Gardens which was considered to be a valuable resource to both locals and tourists accessing the Boscombe pier and beaches. The Task and Finish Group acknowledged the associated links with Boscombe Chine Gardens and that this area should be included within the parish boundary. The proposed boundary for the parish has therefore been extended accordingly to the west. There are no properties within the extended area and therefore no impact upon the effective delivery of elections.
- 1.8 Warding proposals and the number of councillors were included within the submission, and these have been supported by the Task and Finish Group. In summary it is proposed to have four wards with 14 councillors in total.
- 1.9 To the east of this proposal is Southbourne, which also had a number of submissions for a new parish which are set out in a separate section of this document. However, submissions for the two areas acknowledged the existing BCP ward boundary between Boscombe & Pokesdown and Southbourne is artificial for electoral purposes and this will require testing through the stage 3 consultation process. However, the Task and Finish Group were minded to make some minor alterations at this stage and to redraw the boundary for inclusion in the draft recommendations. These minor alterations relate to the area known as Fisherman's Walk and the small shopping areas at Portman Terrace and Beresford Road. The area outlined in red below is therefore proposed to be included within the boundary of the Southbourne parish for the purposes of the consultation.



- 1.10 It is an important democratic principle that each person's vote should be of equal weight so far as possible, having regard to other legitimate competing factors, when it comes to the election of councillors. Guidance suggests that it is not in the interests of effective and convenient local government to have significant variances in levels of representation between different parish wards. There is a risk that where one parish ward is over-represented by councillors, the residents of that parish ward (and their councillors) could be perceived as having more influence than others on the council.
- 1.11 Guidance further recommends that the elector to councillor ratio variance should be within +/-10%.
- 1.12 The following warding pattern is recommended by the Task and Finish Group with a total of 14 elected representatives. The projected elector to councillor ratio under these arrangements would be 1,177:1 with the resultant variances ranging between -6.9% to +4.3%.

Parish ward	Electorate 2025	Electorate 2030	Seats	Elector Ratio	Variance from average
Boscombe Spa & Shelley Manor (BW1 and BW4)	4,709	4,907	4	1,227	+4.3%
St Clements & Boscombe Hospital (BW2 and BW3)	3,247	3,287	3	1,096	-6.9%
Portman Manor & Pokesdown Central (BE1 and BE2)	3,546	3,643	3	1,214	+3.2%
Boscombe North & Pokesdown Hill (BE3 and BE4)	4,530	4,634	4	1,159	-1.5%
Total	16,032	16,471	14		



- 1.13 The Task and Finish Group having considered the representations received, make the following draft recommendations.

2. Draft Recommendations

- 2.1 As part of the current Community Governance Review of Bournemouth, Christchurch and Poole, under the terms of reference published on 16 October 2024, the Council has made the following draft recommendations in relation to the unparished area referred to as Boscombe and Pokesdown:

- 2.2 That:

- (a) a parish of Boscombe and Pokesdown be established;
- (b) the boundary of the parish of Boscombe and Pokesdown be drawn to include the existing polling districts of BE1 - Boscombe East & Pokesdown 1, BE2 - Boscombe East & Pokesdown 2, BE3 - Boscombe East & Pokesdown 3, BE4 - Boscombe East & Pokesdown 4, BW1 - Boscombe West 1, BW2 - Boscombe West 2, BW3 - Boscombe West 3, BW4 - Boscombe West 4, and part of EC1 - East Cliff & Springbourne 1, as outlined in red on the map in paragraph 1.12 above;
- (c) the name of the established parish be Boscombe and Pokesdown;
- (d) the style of the parish of Boscombe and Pokesdown be set as a community;
- (e) the parish should have a parish council in the style of community council;
- (f) the name of the community council should be Boscombe and Pokesdown Community Council;
- (g) the parish of Boscombe and Pokesdown be divided into four parish wards, comprising the area designated on the map in paragraph 1.12 above, and named respectively:-
 - (i) Boscombe Spa & Shelley Manor
 - (ii) St Clements & Boscombe Hospital
 - (iii) Portman Manor & Pokesdown Central
 - (iv) Boscombe North & Pokesdown Hill
- (h) the community council for Boscombe and Pokesdown shall consist of 14 councillors;
- (i) the number of councillors elected to each of the respective wards be as follows:-

- (i) Boscombe Spa & Shelley Manor – 4 councillors
- (ii) St Clements & Boscombe Hospital – 3 councillors
- (iii) Portman Manor & Pokesdown Central – 3 councillors
- (iv) Boscombe North & Pokesdown Hill – 4 councillors

I. SOUTHBOURNE

1. Background

- 1.1 The area referred to in this section as Southbourne is unparished and comprises the polling district areas detailed in the table in paragraph 1.2 below. Maps showing the extent of all polling districts are contained in a separate annex on the Council's web site.
- 1.2 A summary of the polling district electorate forecast is shown in the table below:-

Polling Districts	Electorate 2025	Electorate 2030
ES1 - East Southbourne & Tuckton 1	2,363	2,430
ES2 - East Southbourne & Tuckton 2	2,700	2,725
ES3 - East Southbourne & Tuckton 3	2,348	2,380
WS1 - West Southbourne 1	2,515	2,583
WS2 - West Southbourne 2	2,681	2,704
WS3 - West Southbourne 3	2,386	2,398
Total	14,993	15,220

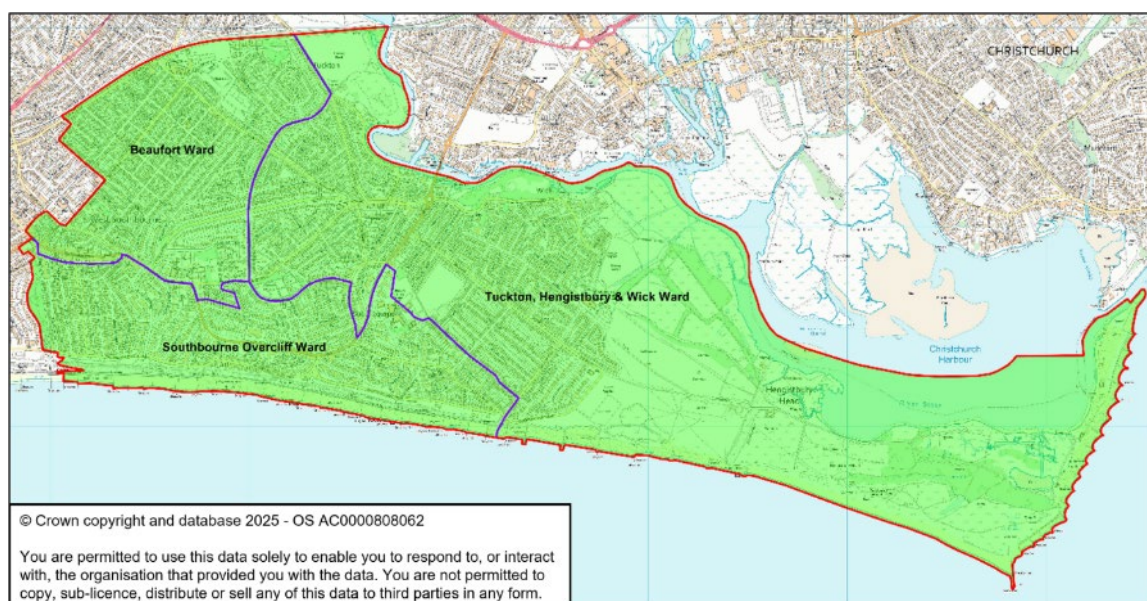
- 1.3 The polling districts form the building blocks for the proposed parish which are coterminous with the BCP Council wards of West Southbourne and East Southbourne & Tuckton.
- 1.4 The projected electorate growth over 5 years is 1.51%.
- 1.5 Six submissions (36), (42), (43), 44), (48) and (54) were received relating to this part of east Bournemouth. Five were similar in support of a Southbourne parish, although submission (44) was not supportive and expressed concern about the management of the allotments site to the north of the area. Submission (38) suggested that the whole of Bournemouth, including Boscombe and Pokesdown, Southbourne and Redhill and Northbourne, should be established as a single Town Council, however, the Task and Finish Group considered that there was sufficient evidence to support this as an independent standalone proposal.
- 1.6 Although the Task and Finish Group considered the views of the Bournemouth East Allotment Society, redrawing the boundary to exclude the allotments would not be appropriate. It was further noted that there should be no reason for the operation of the allotments to be detrimentally impacted by inclusion in the parish boundary.
- 1.7 Warding proposals and the number of councillors were included within a number of the submission, and these have been largely supported by the Task and Finish Group. In summary it is proposed to have three wards with 12 councillors in total.

- 1.8 To the west of this proposal is Boscombe and Pokesdown, which also had a number of submissions for a new parish which are set out in a separate section of this document. However, submissions for the two areas acknowledged the existing BCP ward boundary between Boscombe & Pokesdown and Southbourne is artificial for electoral purposes and this will require testing through the stage 3 consultation process. However, the Task and Finish Group were minded to make some minor alterations at this stage and to redraw the boundary for inclusion in the draft recommendations. These minor alterations relate to the area known as Fisherman's Walk and the small shopping areas at Portman Terrace and Beresford Road. The area outlined in red below is therefore proposed to be included within the boundary of the Southbourne parish for the purposes of the consultation.



- 1.9 It is an important democratic principle that each person's vote should be of equal weight so far as possible, having regard to other legitimate competing factors, when it comes to the election of councillors. Guidance suggests that it is not in the interests of effective and convenient local government to have significant variances in levels of representation between different parish wards. There is a risk that where one parish ward is over-represented by councillors, the residents of that parish ward (and their councillors) could be perceived as having more influence than others on the council.
- 1.10 Guidance further recommends that the elector to councillor ratio variance should be within +/-10%.
- 1.11 The following warding pattern is recommended by the Task and Finish Group with a total of 12 elected representatives. The projected elector to councillor ratio under these arrangements would be 1,268:1 with the resultant variances ranging between -1.2% to +0.6%.

Parish ward	Electorate 2025	Electorate 2030	Seats	Elector Ratio	Variance from average
Beaufort (WS2 and WS3)	5,067	5,102	4	1,276	+0.6%
Southbourne Overcliff (WS1 and ES1)	4,878	5,013	4	1,253	-1.2%
Tuckton, Hengistbury Head and Wick (ES2 and ES3)	5,048	5,105	4	1,276	+0.6%
Total	14,993	15,220	12		



- 1.12 The Task and Finish Group having considered the representations received, make the following draft recommendations.

2. Draft Recommendations

- 2.1 As part of the current Community Governance Review of Bournemouth, Christchurch and Poole, under the terms of reference published on 16 October 2024, the Council has made the following draft recommendations in relation to the unparished area referred to as Southbourne:
- 2.2 That:
- (a) a parish of Southbourne be established;
 - (b) the boundary of the parish of Southbourne be drawn to include the existing polling districts of ES1 - East Southbourne & Tuckton 1, ES2 - East Southbourne & Tuckton 2, ES3 - East Southbourne & Tuckton 3, WS1 - West Southbourne 1, WS2 - West Southbourne 2, WS3 - West Southbourne 3, and parts of BE2 - Boscombe East & Pokesdown 2 and BE3 - Boscombe East & Pokesdown 3, as outlined in red on the map in paragraph 1.11 above;

- (c) the name of the established parish be Southbourne;
- (d) the style of the parish of Southbourne be set as a community;
- (e) the parish should have a parish council in the style of community council;
- (f) the name of the community council should be Southbourne Community Council;
- (g) the parish of Southbourne be divided into four parish wards, comprising the area designated on the map in paragraph 1.12 above, and named respectively:-
 - (i) Tuckton, Hengistbury Head and Wick
 - (ii) Beaufort
 - (iii) Southbourne Overcliff
- (h) the community council for Southbourne shall consist of 12 councillors;
- (i) the number of councillors elected to each of the respective wards be as follows:-
 - (i) Tuckton, Hengistbury Head and Wick – 4 councillors
 - (ii) Beaufort – 4 councillors
 - (i) Southbourne Overcliff – 4 councillors

J. POOLE TOWN

1. Background

- 1.1 The area referred to in this section as Poole is unparished and comprises the polling district areas detailed in the table in paragraph 1.4 below. Maps showing the extent of all polling districts are contained in a separate annex on the Council's web site.
- 1.2 The area is currently served by the Charter Trustees for Poole which was established in 2019 to maintain and safeguard the historic charters of Poole and to promote the civic and ceremonial traditions of the mayoralty. The Charter Trustees, which levies a precept on the Council tax, cannot be abolished unless the whole of the area covered by the Charter Trustees is replaced with town or parish councils.
- 1.3 The Charter Trustees and the Mayors for Poole since 2019 have expressed some frustration with the constraints of the current arrangements, and the limitations to support key local events, individuals or community groups with fund-raising initiatives, etc.. The establishment of a Town Council for Poole would continue to protect the historic charters, armorial bearings, civic regalia and other assets, but allow additional freedoms to support other activities throughout Poole.
- 1.4 A summary of the polling district electorate forecast is shown in the table below:-

Polling Districts	Electorate 2025	Electorate 2030
AB1 - Alderney & Bourne Valley 1	2,447	2,451
AB2 - Alderney & Bourne Valley 2	1,974	1,978
AB3 - Alderney & Bourne Valley 3	1,628	1,630
AB4 - Alderney & Bourne Valley 4	2,085	2,092
AB5 - Alderney & Bourne Valley 5	1,154	1,156
AB6 - Alderney & Bourne Valley 6 (combined with AB6-A)	2,725	2,737
BM1 - Bearwood & Merley 1	1,446	1,451
BM2 - Bearwood & Merley 2	1,557	2,206
BM3 - Bearwood & Merley 3	1,784	1,796
BM4 - Bearwood & Merley 4	2,315	3,031
BM5 - Bearwood & Merley 5	1,524	1,530
BM6 - Bearwood & Merley 6	1,269	1,289
BM7 - Bearwood & Merley 7 (combined with B7-A)	1,375	1,390
CC1 - Canford Cliffs 1	1,599	1,691
CC2 - Canford Cliffs 2	1,520	1,636

Polling Districts	Electorate 2025	Electorate 2030
CC3 - Canford Cliffs 3 (combined with CC3-A)	1,849	1,910
CC4 - Canford Cliffs 4	1,807	1,834
CC5 - Canford Cliffs 5	1,295	1,404
CH1 - Canford Heath 1	1,154	1,161
CH2 - Canford Heath 2	1,492	1,501
CH3 - Canford Heath 3	1,313	1,322
CH4 - Canford Heath 4	1,201	1,208
CH5 - Canford Heath 5 (combined with CH5-A)	2,238	2,251
CH6 - Canford Heath 6	1,805	1,835
CH7 - Canford Heath 7	1,545	1,554
CR1 - Creekmoor 1	1,627	1,709
CR2 - Creekmoor 2	1,681	1,883
CR3 - Creekmoor 3	1,271	1,276
CR4 - Creekmoor 4	1,511	1,518
CR5 - Creekmoor 5	1,270	1,275
HY1 - Hamworthy 1	2,378	2,387
HY2 - Hamworthy 2	1,515	1,541
HY3 - Hamworthy 3	1,492	1,503
HY4 - Hamworthy 4	1,974	1,991
HY5 - Hamworthy 5	1,417	1,579
HY6 - Hamworthy 6	1,748	1,762
NH1 - Newtown & Heatherlands 1	1,452	1,634
NH2 - Newtown & Heatherlands 2	1,840	1,873
NH3 - Newtown & Heatherlands 3	2,452	2,484
NH4 - Newtown & Heatherlands 4	1,581	1,598
NH5 - Newtown & Heatherlands 5	1,658	1,674
NH6 - Newtown & Heatherlands 6	1,979	2,068
NH6-A - Newtown & Heatherlands 6A	489	492
NH7 - Newtown & Heatherlands 7	1,848	1,875
OK1 - Oakdale 1	1,038	1,050
OK2 - Oakdale 2	1,184	1,195

Polling Districts	Electorate 2025	Electorate 2030
OK3 - Oakdale 3	1,683	1,793
OK4 - Oakdale 4	2,416	2,436
OK5 - Oakdale 5	2,209	2,228
PH1 - Penn Hill 1	1,844	1,873
PH2 - Penn Hill 2	2,117	2,191
PH3 - Penn Hill 3	2,106	2,139
PH4 - Penn Hill 4	2,760	2,888
PS1 - Parkstone 1	1,394	1,549
PS2 - Parkstone 2	2,984	3,076
PS3 - Parkstone 3	2,158	2,199
PS4 - Parkstone 4	2,123	2,264
PT1 - Poole Town 1	1,458	2,276
PT2 - Poole Town 2	2,541	2,594
PT3 - Poole Town 3	1,887	1,908
PT4 - Poole Town 4	2,605	2,633
PT5 - Poole Town 5	1,602	2,066
TB1 - Talbot & Branksome Woods 1 (Part)	162	163
TB4 - Talbot & Branksome Woods 4	1,192	1,197
TB5 - Talbot & Branksome Woods 5 (Part)	829	832
TB6 - Talbot & Branksome Woods 6	972	982
WB4 - Westbourne & West Cliff 4 (Part)	114	115
Total	112,662	117,813

- 1.5 The polling districts form the building blocks for the proposed parish which are where possible coterminous with the BCP Council wards across the area.
- 1.6 The projected electorate growth over 5 years is 4.57%.
- 1.7 There were a number of submissions for the Poole area, including individual proposals for separate local councils in Hamworthy, Alderney and Bourne Valley, Parkstone, and a combined area of Parkstone, Canford Cliffs and Penn Hill. A further submission was received for a Town Council covering Poole Town, Hamworthy, Creekmoor, Oakdale and Parkstone.
- 1.8 The Task and Finish Group considered the proposals which demonstrated an appetite for potential new local governance arrangements, but felt that there was

insufficient evidence to demonstrate that the proposals would lead to, or bring about, improved community engagement, cohesion or local democracy contrary to the aim of the review. In many cases the proposed boundaries sub-divided key retail areas and community facilities and as a consequence the submissions were not supported at this stage.

- 1.9 However, the Task and Finish Group was encouraged with the number of submissions supporting the principle of a town council for the whole of Poole and have agreed to recommend the establishment of a new Town Council for the area defined in this section of the report, and to seek the wider public opinion through the formal Stage 3 Consultation process.
- 1.10 If there is insufficient support for the establishment of a Town Council for Poole, the fallback position will be to continue with the Charter Trustees for the whole of the former borough of Poole, including any areas separately parished. As stated above, the Charter Trustees cannot be abolished unless the whole area is replaced by one or more parish or town councils.
- 1.11 It is important to clarify that the retention of the Charter Trustees, would result in double taxation at a parish level for those areas covered by a separate local council.
- 1.12 The submissions suggesting a whole of Poole Town Council, did provide warding proposals and a number of councillors, however, these did not provide for fair electoral equality. If the establishment of a town council for Poole is sufficiently supported, it will be necessary to refine the precise warding arrangements to secure improved electoral equality but the calculations below illustrate the current draft proposals.
- 1.13 It is an important democratic principle that each person's vote should be of equal weight so far as possible, having regard to other legitimate competing factors, when it comes to the election of councillors. Guidance suggests that it is not in the interests of effective and convenient local government to have significant variances in levels of representation between different parish wards. There is a risk that where one parish ward is over-represented by councillors, the residents of that parish ward (and their councillors) could be perceived as having more influence than others on the council.
- 1.14 Guidance further recommends that the elector to councillor ratio variance should be within +/-10%.
- 1.15 The following warding pattern is recommended by the Task and Finish Group with a total of 41 elected representatives. The projected elector to councillor ratio under these arrangements would be 2,807:1 with the resultant variances currently ranging between -10.1% to +8.1%.



Parish ward	Electorate 2025	Electorate 2030	Seats	Elector Ratio	Variance from average
Alderney	5,796	5,819	2	2,910	+3.7%
Bearwood	5,108	5,850	2	2,925	+4.3%
Bourne Valley & Branksome East	8,136	8,167	3	2,722	-2.9%
Branksome West	8,133	8,278	3	2,759	-1.6%
Canford Cliffs	8,070	8,475	3	2,825	+0.7%
Canford Heath East	5,588	5,640	2	2,820	+0.5%
Canford Heath West	5,160	5,192	2	2,596	-7.5%
Creekmoor	7,360	7,661	3	2,554	-9.0%

Parish ward	Electorate 2025	Electorate 2030	Seats	Elector Ratio	Variance from average
Hamworthy East	5,139	5,332	2	2,666	-5.0%
Hamworthy West & Turlin Moor	5,385	5,431	2	2,716	-3.2%
Longfleet & Sterte	5,268	6,153	2	3,077	+9.7%
Merley	4,787	5,453	2	2,727	-2.8%
Newtown	7,891	8,157	3	2,719	-3.1%
Oakdale	8,530	8,702	3	2,901	+3.4%
Old Town & Baiter	4,824	5,328	2	2,662	-5.1%
Parkstone	8,659	9,088	3	3,029	+8.0%
Penn Hill	8,827	9,091	3	3,030	+8.0%
Total	112,662	117,813	42		

- 1.16 If in the event that support is forthcoming for Poole Town Council but not Bournemouth Town Council, it will be necessary to alter the proposed boundary of the Poole Town Council to ensure that the whole of the charter trustee area is included. This will be to ensure the effective and convenient delivery of services.
- 1.17 The Task and Finish Group having considered the representations received, make the following draft recommendations.

2. Draft Recommendations

- 2.1 As part of the current Community Governance Review of Bournemouth, Christchurch and Poole, under the terms of reference published on 16 October 2024, the Council has made the following draft recommendations in relation to the unparished area referred to as Poole:
- 2.2 That:
- (a) a parish of Poole be established;
 - (b) the boundary of the parish of Poole be drawn to include the existing polling districts as listed in paragraph 1.4 and as outlined in red on the map in paragraph 1.15 above;
 - (c) the name of the established parish be Poole;
 - (d) the style of the parish of Poole be set as a town;
 - (e) the parish should have a parish council in the style of town council;
 - (f) the name of the town council should be Poole Town Council;

- (g) the parish of Poole be divided into seventeen parish wards, comprising the area designated on the map in paragraph 1.15 above, and named respectively:-
- (i) Alderney
 - (ii) Bearwood
 - (iii) Bourne Valley & Branksome East
 - (iv) Branksome West
 - (v) Canford Cliffs
 - (vi) Canford Heath East
 - (vii) Canford Heath West
 - (viii) Creekmoor
 - (ix) Hamworthy East
 - (x) Hamworthy West & Turlin Moor
 - (xi) Longfleet & Sterte
 - (xii) Merley
 - (xiii) Newtown
 - (xiv) Oakdale
 - (xv) Old Town & Baiter
 - (xvi) Parkstone
 - (xvii) Penn Hill
- (h) the town council for Poole shall consist of 41 councillors;
- (i) the number of councillors elected to each of the respective wards be as follows:-
- (i) Alderney – 2 councillors
 - (ii) Bearwood – 2 councillors
 - (iii) Bourne Valley & Branksome East – 3 councillors
 - (iv) Branksome West – 3 councillors
 - (v) Canford Cliffs – 3 councillors
 - (vi) Canford Heath East – 2 councillors
 - (vii) Canford Heath West – 2 councillors
 - (viii) Creekmoor – 3 councillors
 - (ix) Hamworthy East – 2 councillors

- (x) Hamworthy West & Turlin Moor – 2 councillors
- (xi) Longfleet & Sterte – 2 councillors
- (xii) Merley – 2 councillors
- (xiii) Newtown – 3 councillors
- (xiv) Oakdale – 3 councillors
- (xv) Old Town & Baiter – 2 councillors
- (xvi) Parkstone – 3 councillors
- (xvii) Penn Hill – 3 councillors

K. BOURNEMOUTH TOWN

1. Background

- 1.1 The area referred to in this section as Bournemouth is unparished and comprises the polling district areas detailed in the table in paragraph 1.4 below. Maps showing the extent of all polling districts are contained in a separate annex on the Council's web site.
- 1.2 The area is currently served by the Charter Trustees for Bournemouth which was established in 2019 to maintain and safeguard the historic charters of Bournemouth and to promote the civic and ceremonial traditions of the mayoralty. The Charter Trustees, which levies a precept on the Council tax, cannot be abolished unless the whole of the area covered by the Charter Trustees is replaced with town or parish councils.
- 1.3 The establishment of a Town Council for Bournemouth, if supported, would continue to protect the historic charters, armorial bearings, civic regalia and other assets, but allow additional freedoms, not available via the Charter Trustees, to support other activities throughout Bournemouth, excluding those areas where separate councils are to be created. If a Bournemouth Town Council is not created the Charter Trustees will continue their duties as present for the whole of the former Bournemouth borough area.
- 1.4 A summary of the polling district electorate forecast is shown in the table below:-

Polling Districts	Electorate 2025	Electorate 2030
BC1 - Bournemouth Central 1	2,534	3,032
BC2 - Bournemouth Central 2	1,117	1,172
BC3 - Bournemouth Central 3	1,550	1,627
BC4 - Bournemouth Central 4	3,008	4,136
BC5 - Bournemouth Central 5	1,371	1,721
EC1 - East Cliff & Springbourne 1	1,668	1,684
EC2 - East Cliff & Springbourne 2	2,043	2,071
EC3 - East Cliff & Springbourne 3	2,049	2,095
EC4 - East Cliff & Springbourne 4	1,642	1,713
EC5 - East Cliff & Springbourne 5	2,402	2,456
EC6 - East Cliff & Springbourne 6	1,992	2,022

Polling Districts	Electorate 2025	Electorate 2030
KN1 - Kinson 1	2,266	2,297
KN2 - Kinson 2	1,743	1,780
KN3 - Kinson 3	1,865	1,877
KN4 - Kinson 4	1,956	1,981
KN5 - Kinson 5	2,567	2,581
KN6 - Kinson 6	2,483	2,495
LI1 - Littledown & Iford 1	1,087	1,091
LI2 - Littledown & Iford 2	2,463	2,476
LI3 - Littledown & Iford 3	2,335	2,342
LI4 - Littledown & Iford 4	1,708	1,714
MN1 - Moordown 1	1,835	1,895
MN2 - Moordown 2	1,751	1,766
MN3 - Moordown 3	1,802	1,812
MN4 - Moordown 4	2,108	2,126
MS1 - Muscliff & Strouden Park 1 (combined with MS1-A)	1,827	1,840
MS2 - Muscliff & Strouden Park 2	544	546
MS3 - Muscliff & Strouden Park 3	2,083	2,093
MS4 - Muscliff & Strouden Park 4	1,992	2,001
MS5 - Muscliff & Strouden Park 5	1,309	1,319
MS6 - Muscliff & Strouden Park 6	2,029	2,037
MS7 - Muscliff & Strouden Park 7	2,239	2,258
QP1 - Queens Park 1	2,247	2,298
QP2 - Queens Park 2	1,614	1,622
QP3 - Queens Park 3	2,667	2,734
QP4 - Queens Park 4	1,538	1,549
TB1 - Talbot & Branksome Woods 1 (part)	2,320	2,331
TB2 - Talbot & Branksome Woods 2	2,212	2,228
TB3 - Talbot & Branksome Woods 3	2,372	2,428
TB5 - Talbot & Branksome Woods 5 (part)	99	99
WB1 - Westbourne & West Cliff 1 (combined with WB1-A)	2,295	2,419
WB2 - Westbourne & West Cliff 2	2,252	2,282

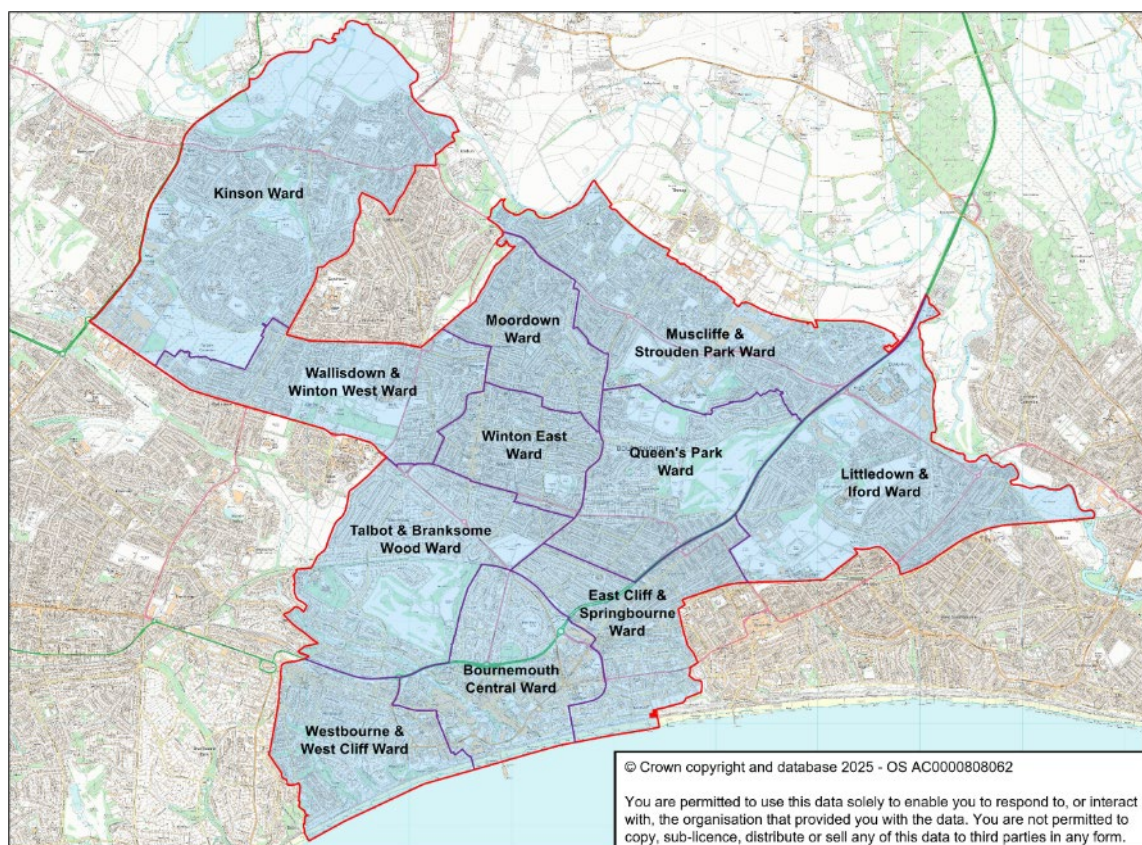
Polling Districts	Electorate 2025	Electorate 2030
WB3 - Westbourne & West Cliff 3	2,477	2,598
WB4 - Westbourne & West Cliff 4 (part)	1,196	1,211
WE1 - Winton East 1	1,404	1,429
WE2 - Winton East 2	2,171	2,230
WE3 - Winton East 3	1,907	1,940
WE4 - Winton East 4	897	942
WE5 - Winton East 5	1,188	1,207
WW1 - Wallisdown & Winton West 1	2,499	2,510
WW2 - Wallisdown & Winton West 2	2,035	2,065
WW3 - Wallisdown & Winton West 3	1,623	1,637
WW4 - Wallisdown & Winton West 4	1,340	1,349
Total	99,721	103,164

- 1.5 The polling districts form the building blocks for the proposed parish which are where possible coterminous with the BCP Council wards across the area.
- 1.6 The projected electorate growth over 5 years is 3.45%.
- 1.7 There were no specific submissions proposing a new Town Council for Bournemouth as set out in this paper, although one submission (38) did suggest a whole of Bournemouth Town Council and not individual smaller councils. There were a number of representations received from councillors that a town council for the remainder of Bournemouth should be not established.
- 1.8 However, the Task and Finish Group have decided, given the existing Holdenhurst Parish Council and the Groups' recommendations for Redhill and Northbourne, Boscombe and Pokesdown, and Southbourne councils, that in the interests of fairness and equity across the whole of the Bournemouth, Christchurch and Poole area, to put forward a proposal for a new Town Council for the remainder of Bournemouth, to ensure the people of the remaining part of Bournemouth are given the chance to support a council, if desired, through the formal stage 3 consultation process.
- 1.9 If there is insufficient support for the establishment of a Town Council for Bournemouth, the fallback position will be to continue with the Charter Trustees for the whole of the former borough of Bournemouth, including any areas separately parished. As stated above, the Charter Trustees cannot be abolished unless the whole area is replaced by one or more parish or town councils.
- 1.10 If the establishment of a town council for Bournemouth is sufficiently supported, it will be necessary to refine the precise warding arrangements to secure improved

electoral equality but the calculations below illustrate the current draft proposals based on the existing warding arrangements for BCP Council.

- 1.11 It is an important democratic principle that each person's vote should be of equal weight so far as possible, having regard to other legitimate competing factors, when it comes to the election of councillors. Guidance suggests that it is not in the interests of effective and convenient local government to have significant variances in levels of representation between different parish wards. There is a risk that where one parish ward is over-represented by councillors, the residents of that parish ward (and their councillors) could be perceived as having more influence than others on the council.
- 1.12 Guidance further recommends that the elector to councillor ratio variance should be within +/-10%.
- 1.13 The following warding pattern is recommended by the Task and Finish Group with a total of 38 elected representatives. The projected elector to councillor ratio under these arrangements would be 2,715:1 with the resultant variances currently ranging between -13.0% to +11.4%. Although, the variances are outside the recommended variances, as stated in paragraph 1.10 above, this would be addressed following the consultation process.

Parish ward	Electorate 2025	Electorate 2030	Seats	Elector Ratio	Variance from average
Bournemouth Central	9,580	11,688	4	2,922	+7.6%
East Cliff & Springbourne	11,796	12,041	4	3,010	+10.9%
Kinson	12,880	13,011	5	2,602	-4.1%
Littledown & Iford	7,593	7,623	3	2,541	-6.4%
Moordown	7,496	7,599	3	2,533	-6.7%
Muscliff & Strouden Park	12,023	12,094	4	3,024	+11.4%
Queen's Park	8,066	8,203	3	2,734	+0.7%
Talbot & Branksome Woods	7,003	7,086	3	2,362	-13.0%
Wallisdown & Winton West	7,497	7,561	3	2,520	-7.2%
Westbourne & West Cliff	8,220	8,510	3	2,837	+4.5%
Winton East	7,567	7,748	3	2,583	-4.9%
Total	99,721	103,164	38		



- 1.14 If in the event that support is forthcoming for Bournemouth Town Council but not Poole Town Council, it will be necessary to alter the proposed boundary of the Bournemouth Town Council to ensure that the whole of the charter trustee area is included. This will be to ensure the effective and convenient delivery of services.
- 1.15 The Task and Finish Group having considered the representations received, make the following draft recommendations.

2. Draft Recommendations

- 2.1 As part of the current Community Governance Review of Bournemouth, Christchurch and Poole, under the terms of reference published on 16 October 2024, the Council has made the following draft recommendations in relation to the unparished area referred to as Bournemouth:
- 2.2 That:
- (a) a parish of Bournemouth be established;
 - (b) the boundary of the parish of Bournemouth be drawn to include the existing polling districts as listed in paragraph 1.4 and as outlined in red on the map in paragraph 1.13 above;
 - (c) the name of the established parish be Bournemouth;
 - (d) the style of the parish of Bournemouth be set as a town;

- (e) the parish should have a parish council in the style of town council;
- (f) the name of the town council should be Bournemouth Town Council;
- (g) the parish of Bournemouth be divided into eleven parish wards, comprising the area designated on the map in paragraph 1.13 above, and named respectively:-
 - (i) Bournemouth Central
 - (ii) East Cliff & Springbourne
 - (iii) Kinson
 - (iv) Littledown & Iford
 - (v) Moordown
 - (vi) Muscliff & Strouden Park
 - (vii) Queen's Park
 - (viii) Talbot & Branksome Woods
 - (ix) Wallisdown & Winton West
 - (x) Westbourne & West Cliff
 - (xi) Winton East
- (h) the town council for Bournemouth shall consist of 38 councillors;
- (i) the number of councillors elected to each of the respective wards be as follows:-
 - (i) Bournemouth Central – 4 councillors
 - (ii) East Cliff & Springbourne – 4 councillors
 - (iii) Kinson – 5 councillors
 - (iv) Littledown & Iford – 3 councillors
 - (v) Moordown – 3 councillors
 - (vi) Muscliff & Strouden Park – 4 councillors
 - (vii) Queen's Park – 3 councillors
 - (viii) Talbot & Branksome Woods – 3 councillors
 - (ix) Wallisdown & Winton West – 3 councillors
 - (x) Westbourne & West Cliff – 3 councillors
 - (xi) Winton East – 3 councillors